






2 Dukes Place Emu Plains NSW

4  2  1 

This home offers the perfect balance of modern living and comfortable proportions. The sleek floors are visually striking and complement the modern kitchen and contemporary decor.

The bathrooms have been beautifully transformed, and the home is equipped with ducted air conditioning, along with a variety of creature comforts throughout the single-level floor plan.

The alfresco entertaining area is perfect for social gatherings, leading to a low-maintenance grassed yard. Additional features include a walk-in robe in the master suite, built-in robes, double linen storage, extensive tiled flooring, and a dome-roofed alfresco space, all set in a

Type : House
Price : \$949,000 - \$999,000
Land Size : 435 sqm
View : <https://www.aitkenre.com.au/8124055>

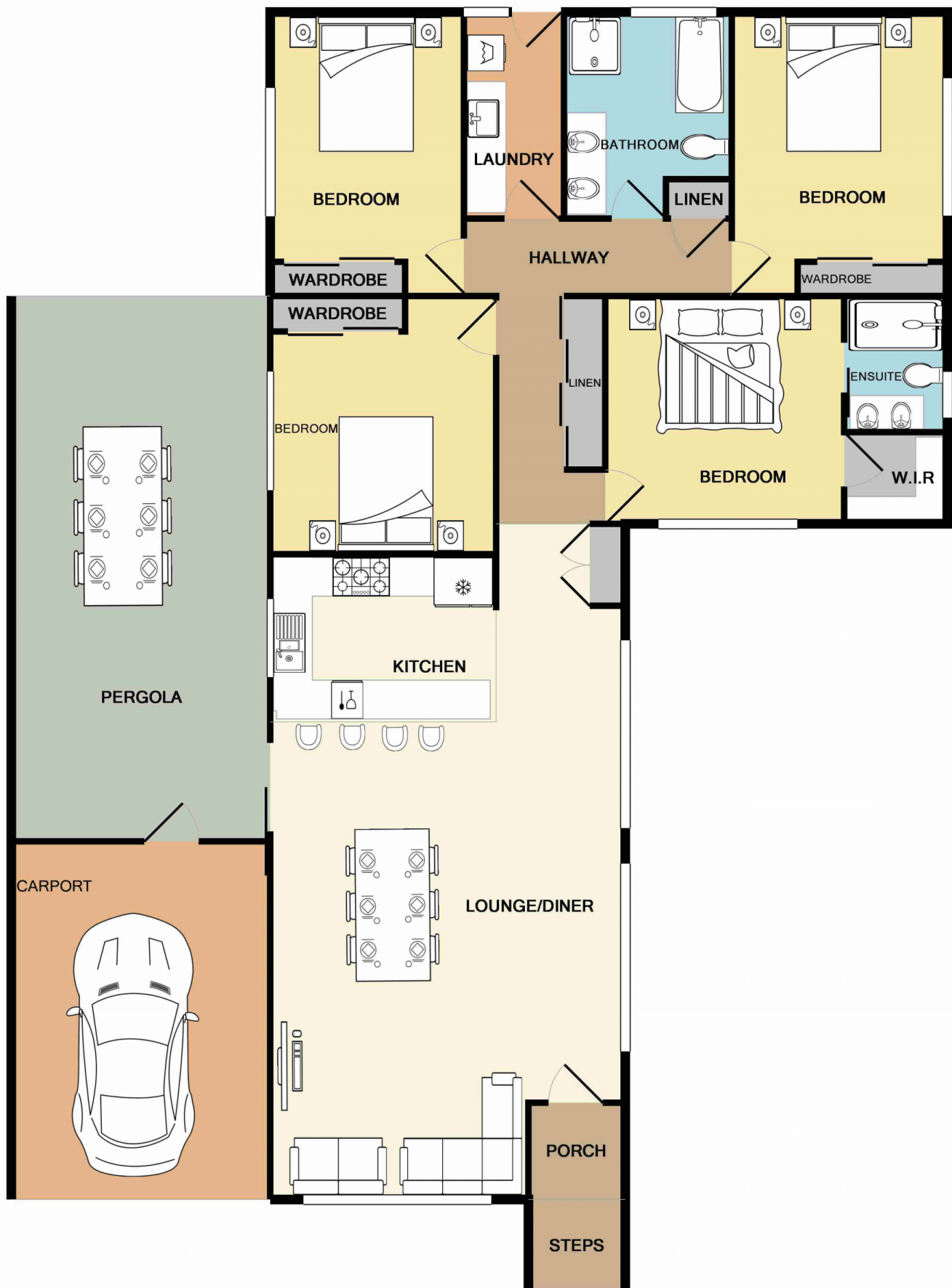


David Reeves
02 4735 2121



Andrew Lia
02 4735 2121

[For full version visit the website](https://www.aitkenre.com.au)



Whilst every attempt has been made to ensure the accuracy of the floor plan contained here, measurements of doors, windows, rooms and any other items are approximate and no responsibility is taken for any error, omission, or mis-statement. This plan is for illustrative purposes only and should be used as such by any prospective purchaser. The services, systems and appliances shown have not been tested and no guarantee as to their operability or efficiency can be given
 Made with Metropix ©2018