






### 32 Resthaven Way Silverdale NSW

4  2  4 

Discover the epitome of modern living in Silverdale Ridge Estate with this near-new, impeccable property. Boasting four spacious bedrooms and two bathrooms complimented by an additional toilet in the laundry area, this home offers ultimate convenience and comfort. The oversized garage provides ample storage, while concrete side access and a double garage at the rear ensure plenty of room for additional parking or hobbies.

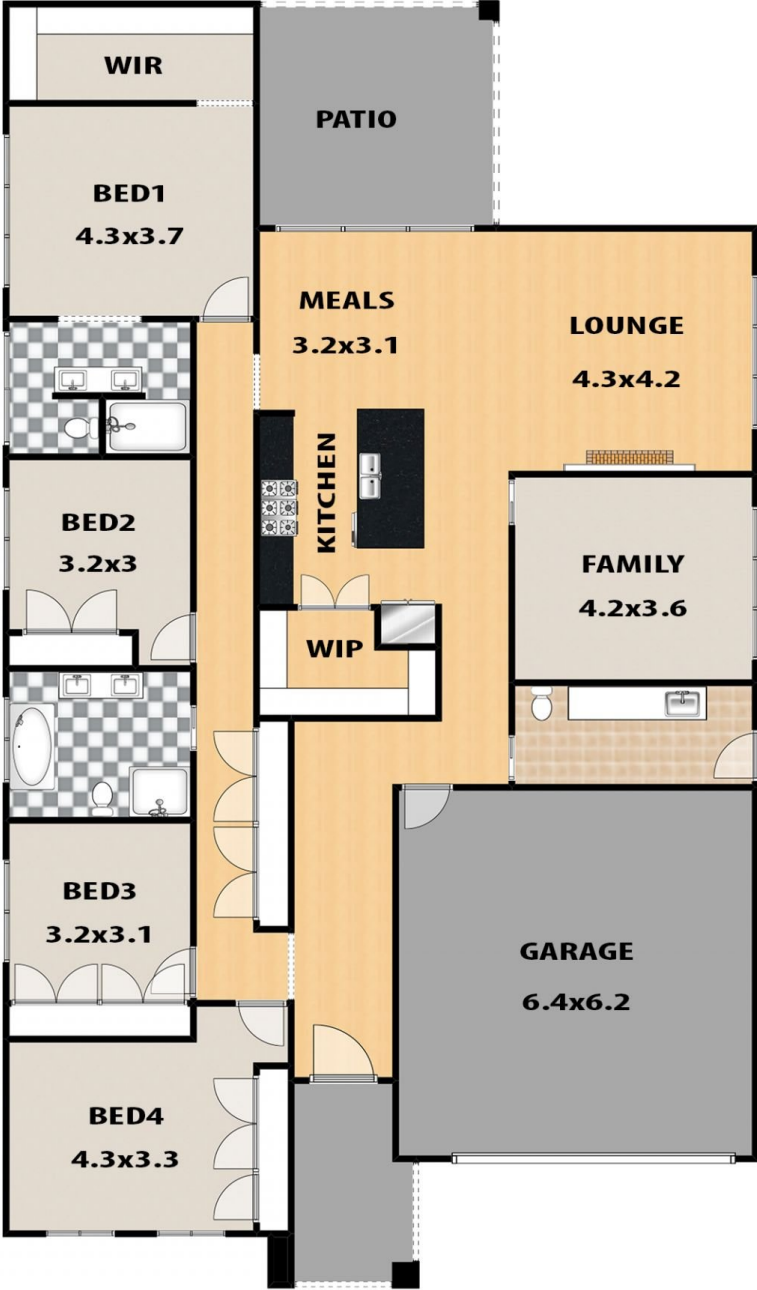
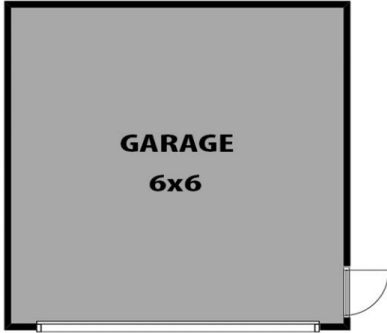
Located in the sought-after Silverdale Ridge Estate, this residence combines contemporary design with practicality, perfect for growing families or those seeking a peaceful retreat with easy access to amenities. Embrace the charm of Silverdale living and explore the endless possibilities this property has to offer.

**Type** : House  
**Price** : \$1,399,000 - \$1,459,000  
**Land Size** : 700 sqm  
**View** : <https://www.aitkenre.com.au/8089788>



**Aimee Mitchell**  
 02 4773 9511

[For full version visit the website](https://www.aitkenre.com.au)



**LEGEND**



BATHROOM  
ENSUITE : WC



LAUNDRY

**32 RESTHAVEN WAY, SILVERDALE**

This floor plan and/or site plan is an approximation for illustration purposes only. All measurements are approximate and not guaranteed to be exact or to scale. Interested parties should confirm measurements by their own means.

