






14 Francis Street Cambridge Park NSW

3  1  2 

Dan + Mitch - Team Hulston are proud to present this fabulous opportunity to enter the market or add to your property portfolio. Situated in a great location on 650sqm, this one will be very popular.

Enjoy these home features

- * 3 Bedrooms
- * Updated kitchen overlooking backyard
- * Spacious lounge room
- * Undercover deck at rear, perfect for entertaining
- * Double carport with drive through access to rear
- * 650sqm with potential for granny flat (STCA)

Enjoy these location features

[For full version visit the website](https://www.aitkenre.com.au/8066782)

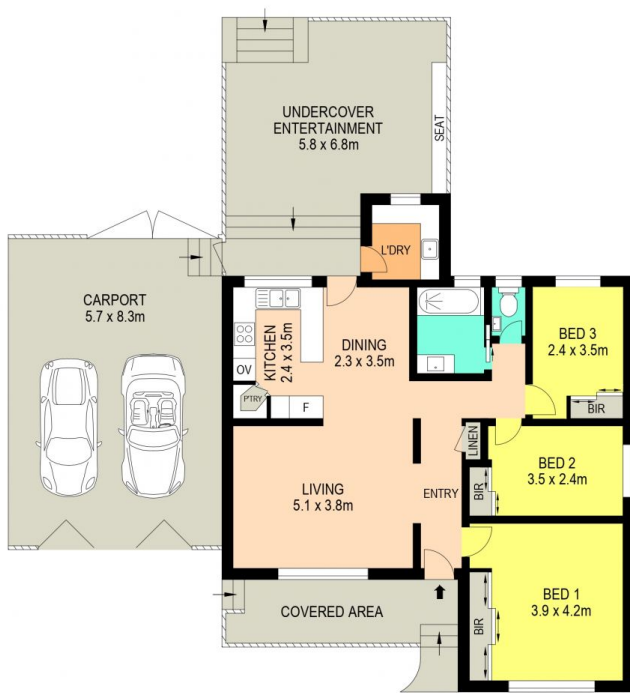
Type : House
Price : \$ 880,000
Land Size : 650 sqm
View : <https://www.aitkenre.com.au/8066782>



Daniel Hulston
02 4732 5055



Mitch Paxton
02 4732 5055



Disclaimer: The above information has been furnished to us by the vendors of the property, Rpdata Google and independent recourses. We have not verified whether or not the information is accurate and do not have any belief one way or the other in its accuracy. We do not accept any responsibility to any person for its accuracy and do no more than pass it on. All interested parties should make their own inquiries in order to determine whether or not this information is in fact accurate.

14 Francis Street, Cambridge Park