






4 Hunt Place Werrington County NSW

4  2  2 

Positioned on the high side of a quiet cul-de-sac, this spacious family home with large double garage and backyard offers the perfect property for a family searching for more space both inside and out.

Boasting spacious interiors across a single level design, this home presents a seamless floor plan with dual living areas, open plan kitchen and dining, four bedrooms and two bathrooms.

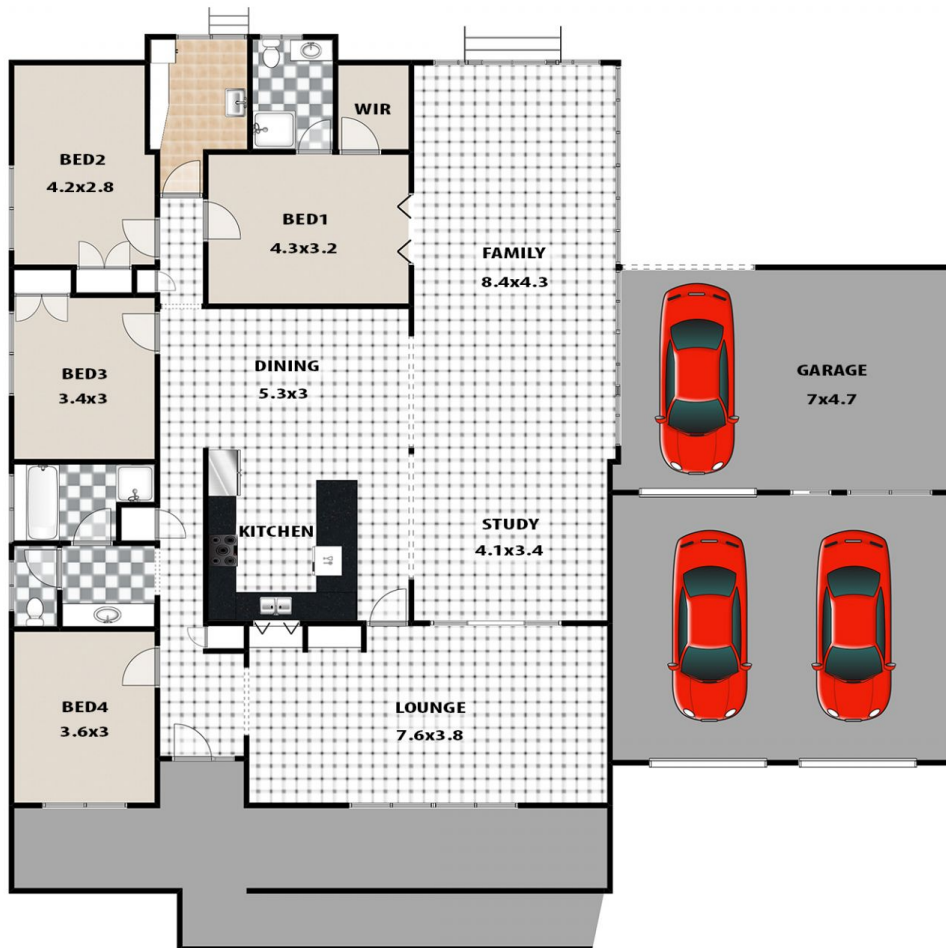
Situated on approx 1131sqm, the property offers an abundance of outdoor entertaining via the large backyard and in ground pool. The property presents a great opportunity for buyers to secure a worthy investment in a family friendly area with the potential to renovate and make

Type : House
Price : \$ 1,020,000
Land Size : 1131 sqm
View : <https://www.aitkenre.com.au/8064192>



Aimee Mitchell
02 4773 9511

[For full version visit the website](https://www.aitkenre.com.au)



LEGEND



4 HUNT PLACE, WERRINGTON COUNTY

This floor plan and/or site plan is an approximation for illustration purposes only.
 All measurements are approximate and not guaranteed to be exact or to scale.
 Interested parties should confirm measurements by their own means.

