



16 Bullen Drive Silverdale NSW

5  3  2 

In the heart of this family friendly estate, this recently built designer home offers all the modern inclusions anyone would need in their next family home. Located in a serene and safe neighbourhood, this home offers the perfect blend of tranquillity and convenience.

With an abundance of natural light, this well thought out floorplan suits small or large families with the huge amounts of space in all the right areas.

The gourmet kitchen is a chef's delight, equipped with top-of-the-line stainless steel appliances, sleek countertops, and ample storage space with a well designed walk-in/butler's pantry. Whether you're hosting your friends and family or cooking for the family, the seamless flow from indoors to out is a must with views through sliding doors to

Type : House
Price : \$1,000,000 - \$1,100,000
Land Size : 577 sqm
View : <https://www.aitkenre.com.au/8064179>



Bradley Millevoi
02 4773 9511



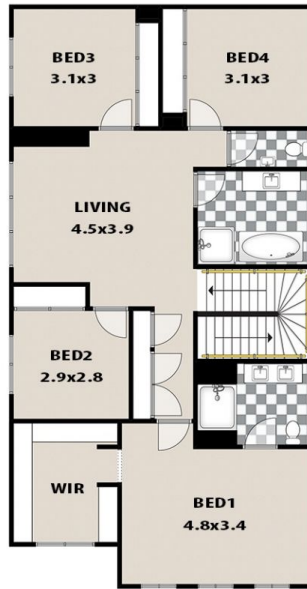
Aimee Mitchell
02 4773 9511

[For full version visit the website](https://www.aitkenre.com.au)

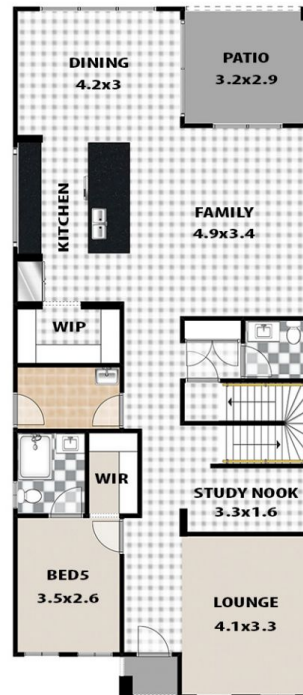
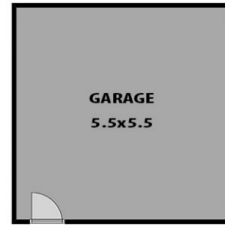
LEGEND

 BATHROOM
ENSUITE: WC

 LAUNDRY



FIRST FLOOR



GROUND FLOOR

16 BULLEN DRIVE, SILVERDALE

This floor plan and/or site plan is an approximation for illustration purposes only.
All measurements are approximate and not guaranteed to be exact or to scale.
Interested parties should confirm measurements by their own means.