






83 Silverdale Road Silverdale NSW

5  2  8 

Privately positioned within Silverdale, this fantastic family home offers space both inside and out. The property offers a seamless floor plan that allows for large bedrooms, multiple living areas, additional study and a huge entertaining area; perfect for the growing family!

With a focus on outdoor storage, this property offers a multitude of opportunity for car/caravan/boat enthusiasts with a double garage under the main roof of the home, additional 4 car carport with drive through access to a huge detached shed. The shed measures approx. 12 by 9.8m and offers a fantastic roof clearance for potential car hoist or mezzanine if desired.

The property is well acquainted to accommodate a large

[For full version visit the website](https://www.aitkenre.com.au/8064158)

Type : House
Price : \$ 1,230,000
Land Size : 1203 sqm
View : <https://www.aitkenre.com.au/8064158>

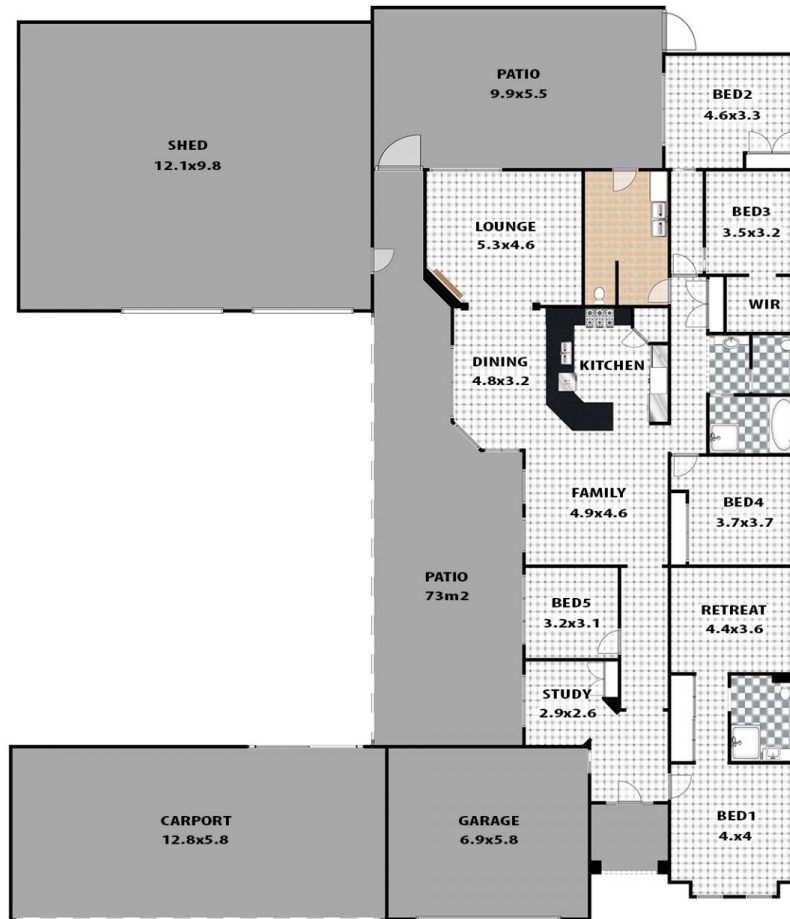


Aimee Mitchell
02 4773 9511

LEGEND

 BATHROOM
ENSUITE: WC

 LAUNDRY



83 SILVERDALE ROAD, SILVERDALE

This floor plan and/or site plan is an approximation for illustration purposes only.
All measurements are approximate and not guaranteed to be exact or to scale.
Interested parties should confirm measurements by their own means.

