



11 Kalangara Road Silverdale NSW

4  2  2 

Situated on the high side of the street, this custom built family home is sure to impress upon inspection. With a commanding street presence and versatile 22m frontage, the home has been positioned to take full advantage of its north/south orientation with sunlit living and dining areas and huge entertainers alfresco with built in wet bar and barbecue.

Easily catering for a down sizing couple or growing family, this beautiful property will cater for most. Give Bradley Millevoi a call on 0402 209 983 to confirm an inspection today!

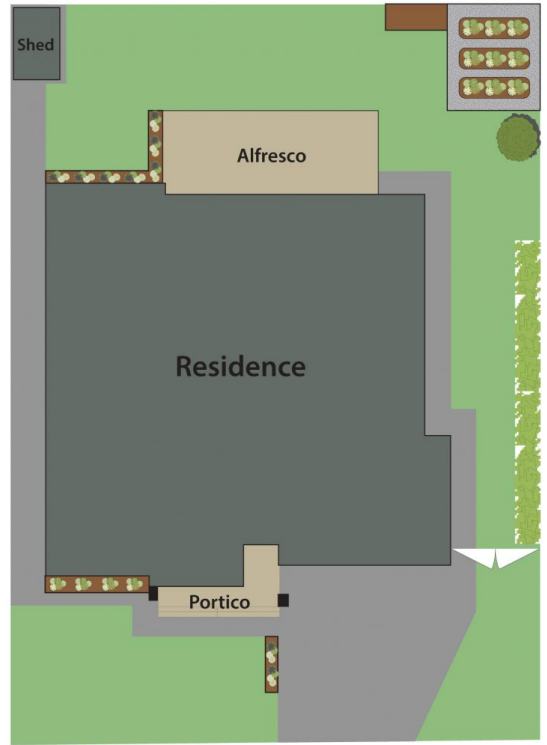
- Commanding street presence located on the high side of

[For full version visit the website](https://www.aitkenre.com.au)

Type : House
Price : \$ 1,289,000
Land Size : 700 sqm
View : <https://www.aitkenre.com.au/8064143>



Bradley Millevoi
02 4773 9511



11 Kalangara Rd, Silverdale .

DISCLAIMER: All dimensions herein are approximate and gathered from sources believed to be reliable. Whilst every effort is made for the accuracy of our plans, interested parties should rely on their own enquiries.

