



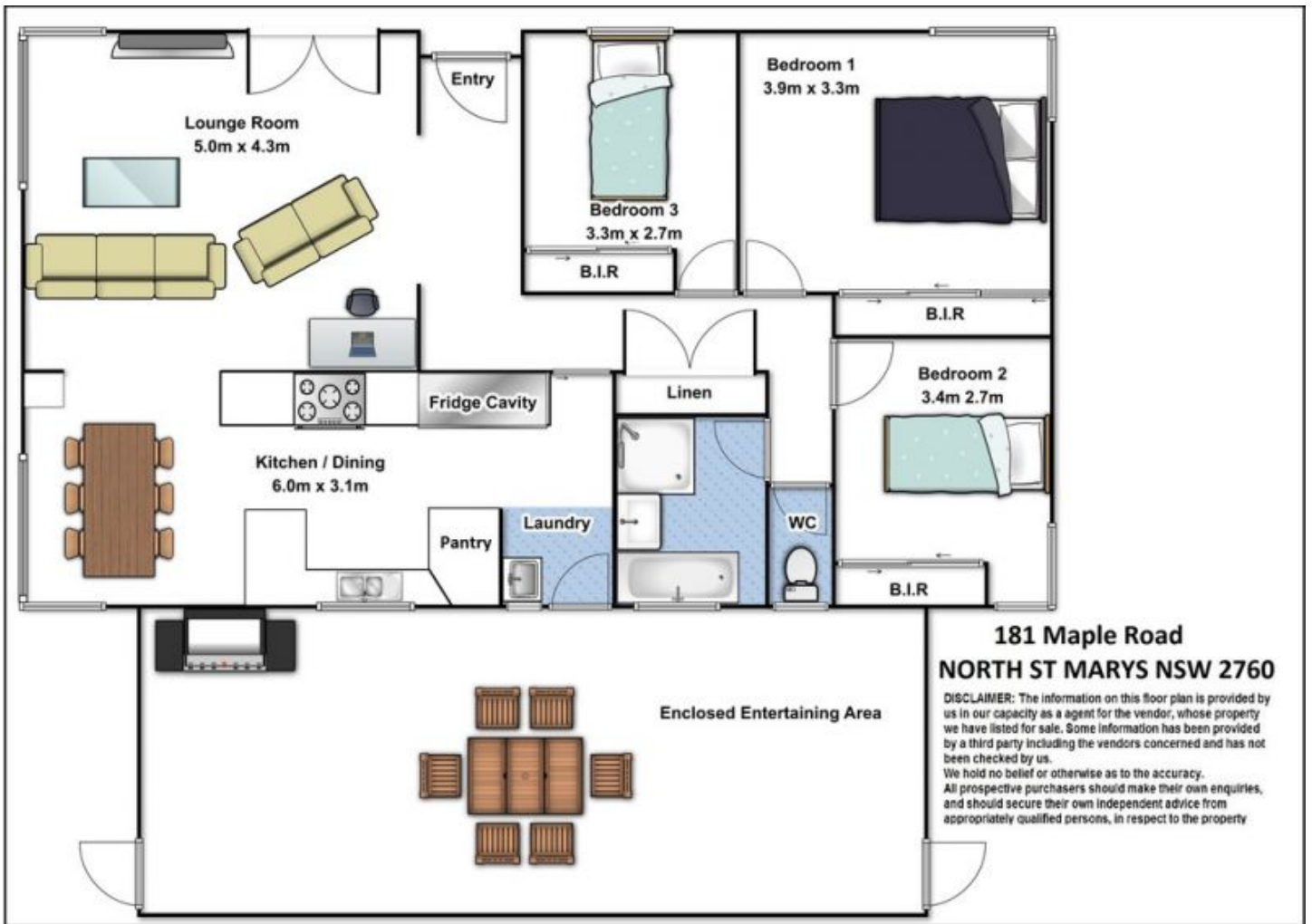
181 Maple Road NORTH ST MARYS NSW

3  1  2 

Type : House  
Land Size : 538 sqm  
View : <https://www.aitkenre.com.au/8063877>



**Damian Sexton**  
02 4732 5055



Lounge Room  
5.0m x 4.3m

Entry

Bedroom 1  
3.9m x 3.3m

Bedroom 3  
3.3m x 2.7m

B.I.R.

B.I.R.

Fridge Cavity

Linen

Bedroom 2  
3.4m x 2.7m

Kitchen / Dining  
6.0m x 3.1m

Pantry

Laundry

WC

B.I.R.

Enclosed Entertaining Area