



**22/171 Derby Street PENRITH NSW**

**2** **1** **1**

Centrally located between Westfield and Nepean Hospital, this immaculately renovated apartment enjoys elevated district views, fresh modern features and a bright open floor plan.

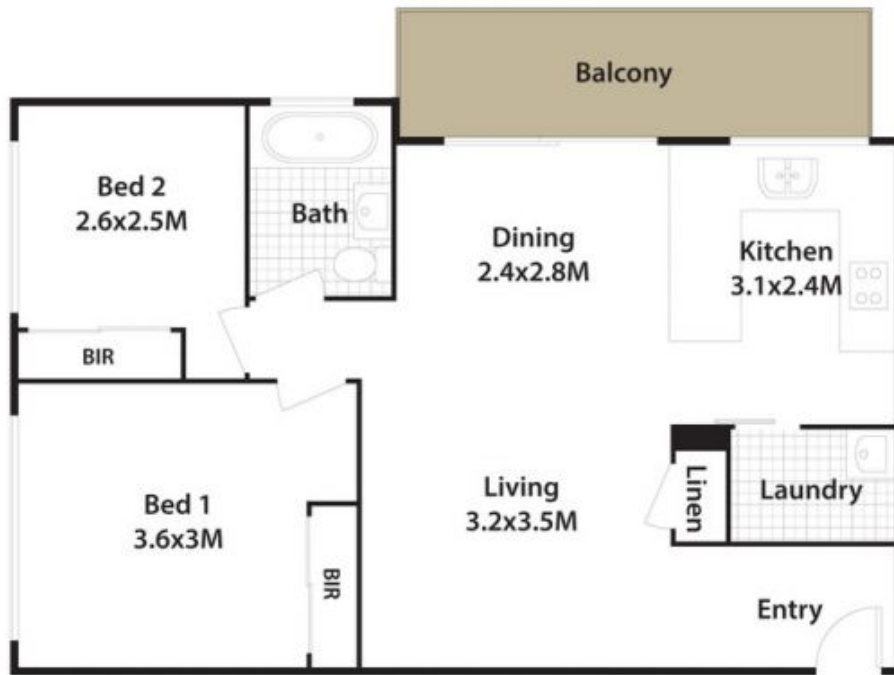
**Type** : Apartment

**View** : <https://www.aitkenre.com.au/8063812>

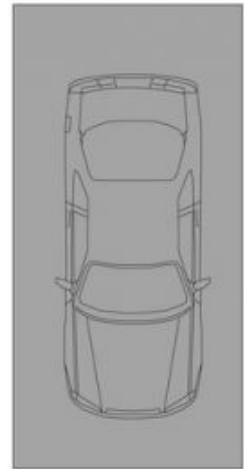
It's set toward rear of a well-maintained secured complex, and is a short distance from Penrith Station, vibrant dining options and quality schools.

- Spacious open lounge/dining zone washed with natural light
- Interiors seamlessly extend to an all-weather balcony
- Wonderfully updated kitchen features a tiled splashback and storage
- Two good-sized bedrooms featuring built-in mirrored

[For full version visit the website](https://www.aitkenre.com.au/8063812)



**Allocated  
Car-port**



**22/171 Derby St, Penrith.**

DISCLAIMER: All dimensions herein are approximate and gathered from sources believed to be reliable. Whilst every effort is made for the accuracy of our plans, interested parties should rely on their own enquiries.

