



**3/5 Adelaide Street OXLEY PARK NSW**

**3** **2** **2**

Small Block of 8 townhouses

Modern Design  
High quality finishes

Kitchen  
Caesar-stone Bench tops  
Kleenmaid Appliances including gas cook-top and dishwasher.

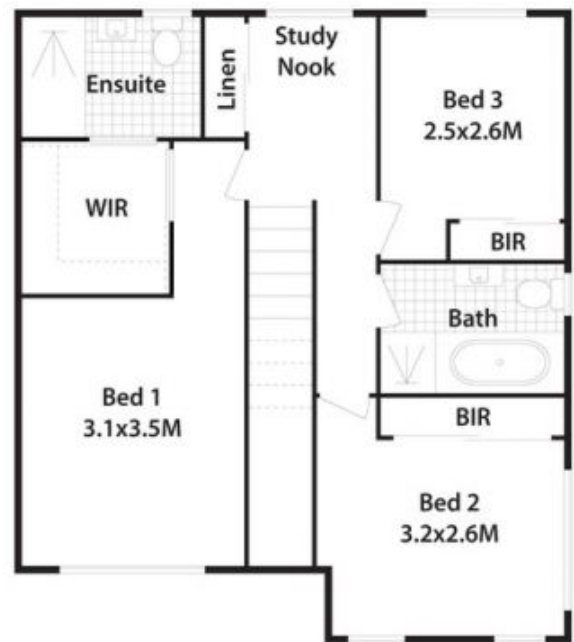
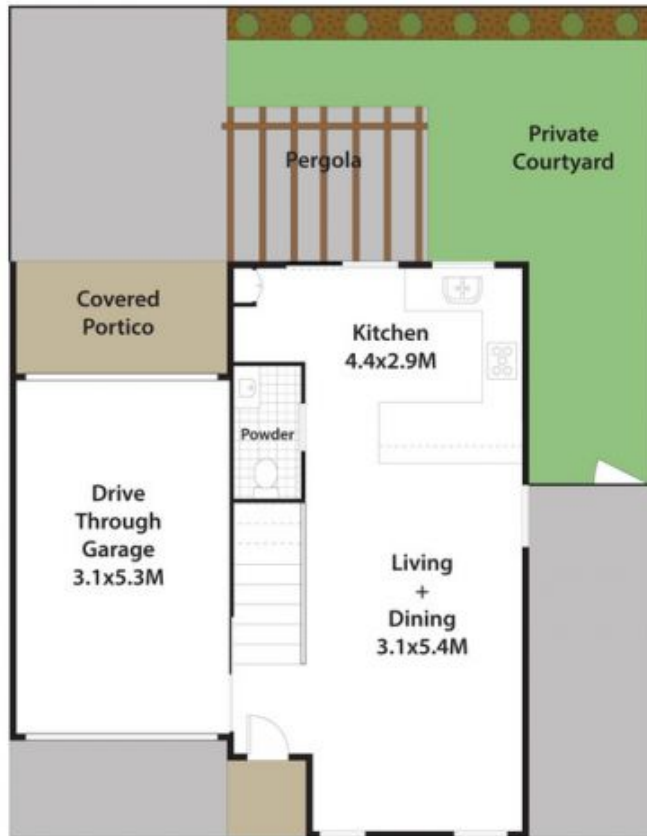
Main Bedroom offers Walk through robe and En-suite  
Other bedrooms all with Built-in Robes

The Luxury of a 2nd Bathroom  
Plus

**Type** : Townhouse

**View** : <https://www.aitkenre.com.au/8063791>

[For full version visit the website](https://www.aitkenre.com.au/8063791)



## 3/5 Adelaide St, Oxley Park.

DISCLAIMER: All dimensions herein are approximate and gathered from sources believed to be reliable. Whilst every effort is made for the accuracy of our plans, interested parties should rely on their own enquiries.

