



**23 Russell Avenue FAULCONBRIDGE NSW**

4 3 4

**Layout**

Fantastic family home with separate lounge and dining areas

Three bathrooms ideal for large or extended families

**Kitchen**

Large gas stove with range-hood, dishwasher and incredible walk in pantry

**Bedrooms**

Main bedroom with walk through robe and ensuite

Plus

Three bedrooms all with built in robes

**Pool**

Fun for all the family and friends

Salt water pool with adjoining entertaining space including large deck

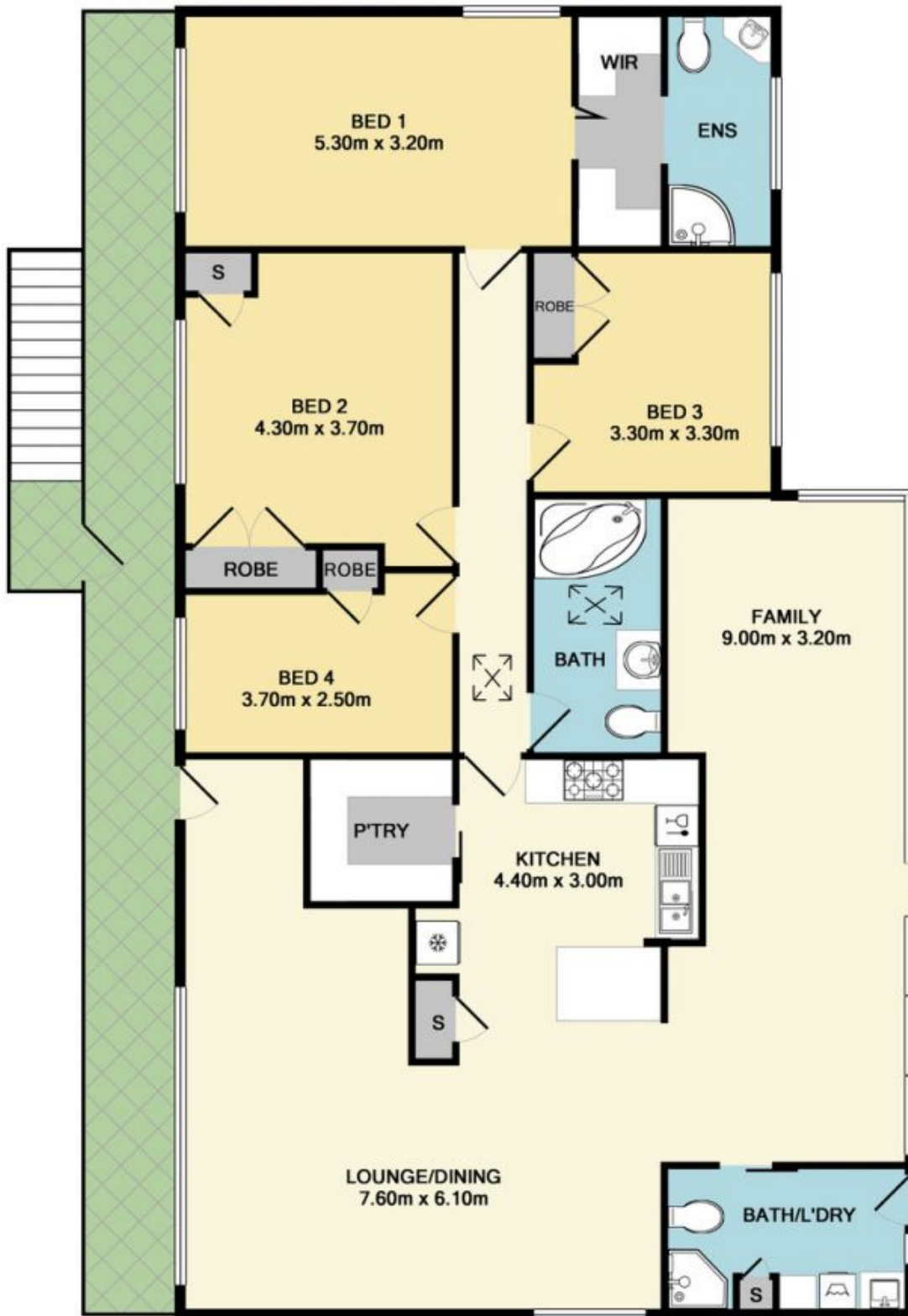
**Type** : House

**Building Size** : 18 sqm

**Land Size** : 999 sqm

**View** : <https://www.aitkenre.com.au/8063774>

[For full version visit the website](https://www.aitkenre.com.au)



TOTAL APPROX. FLOOR AREA 159.8 SQ.M. (1720 SQ.FT.)

Whilst every attempt has been made to ensure the accuracy of the floor plan contained here, measurements of doors, windows, rooms and any other items are approximate and no responsibility is taken for any error, omission, or mis-statement. This plan is for illustrative purposes only and should be used as such by any prospective purchaser. The services, systems and appliances shown have not been tested and no guarantee as to their operability or efficiency can be given  
 Made with Metropix ©2018