



## 28 Marsh Road SILVERDALE NSW

4  2  2 

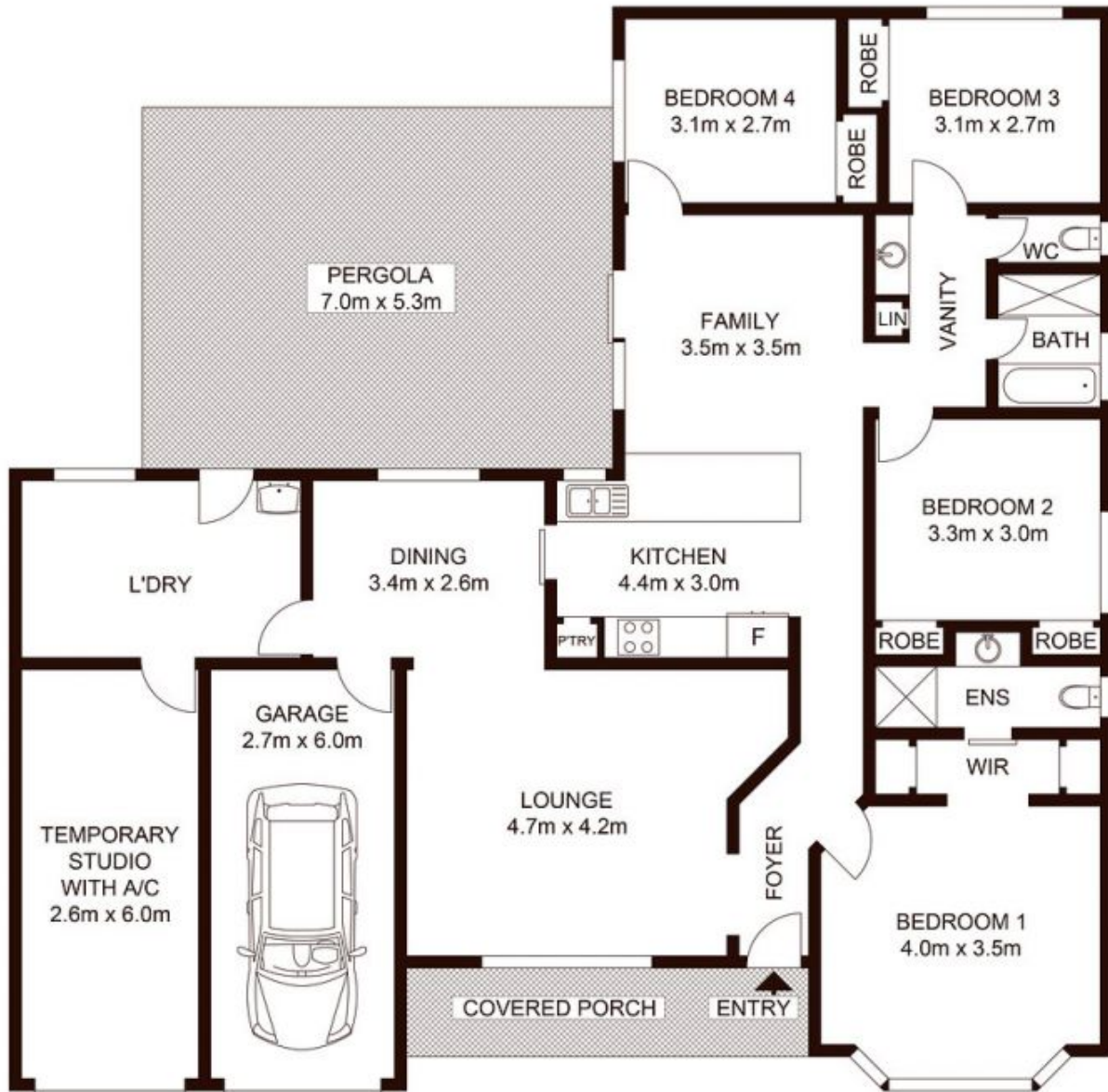
Set on 1010sqm this beautifully presented home has been designed for any growing family to enjoy. The recent renovations encompass modern and stylish living with the added benefit of a massive back yard...

**Type** : House  
**Building Size** : 3 sqm  
**Land Size** : 1010 sqm  
**View** : <https://www.aitkenre.com.au/8063748>

Features Include;

- 4 bedrooms all with built ins and ceiling fans
- Master bedroom with double built ins and stylish ensuite
- Great sized living areas with floating timber floors
- Modern galley style kitchen with Cesar Stone bench tops
- Ducted reverse cycle air conditioning
- Large gable roof pergola
- Side Access
- Double garage (one side is temp home business)

[For full version visit the website](https://www.aitkenre.com.au)



Scale shown in metres. All dimensions herein are approximate and gathered from sources believed to be reliable. Whilst every effort is made for the accuracy of our floor plans, interested parties should rely on their own enquiries.

28 Marsh Road, Silverdale

