



**9-11 Harwood Circuit GLENMORE PARK NSW**

4  2  2 

This superb 4 bedroom, owner designed split level home, ticks 3 of the most important boxes before you even arrive, approximately 30 squares of luxury of living on an 828 sqm block with an enormous side access for the boat or caravan. Modern single or split level homes on large blocks are some of the rarest features to find in Glenmore Park.

**Type** : House  
**Building Size** : 26 sqm  
**Land Size** : 828 sqm  
**View** : <https://www.aitkenre.com.au/8063729>

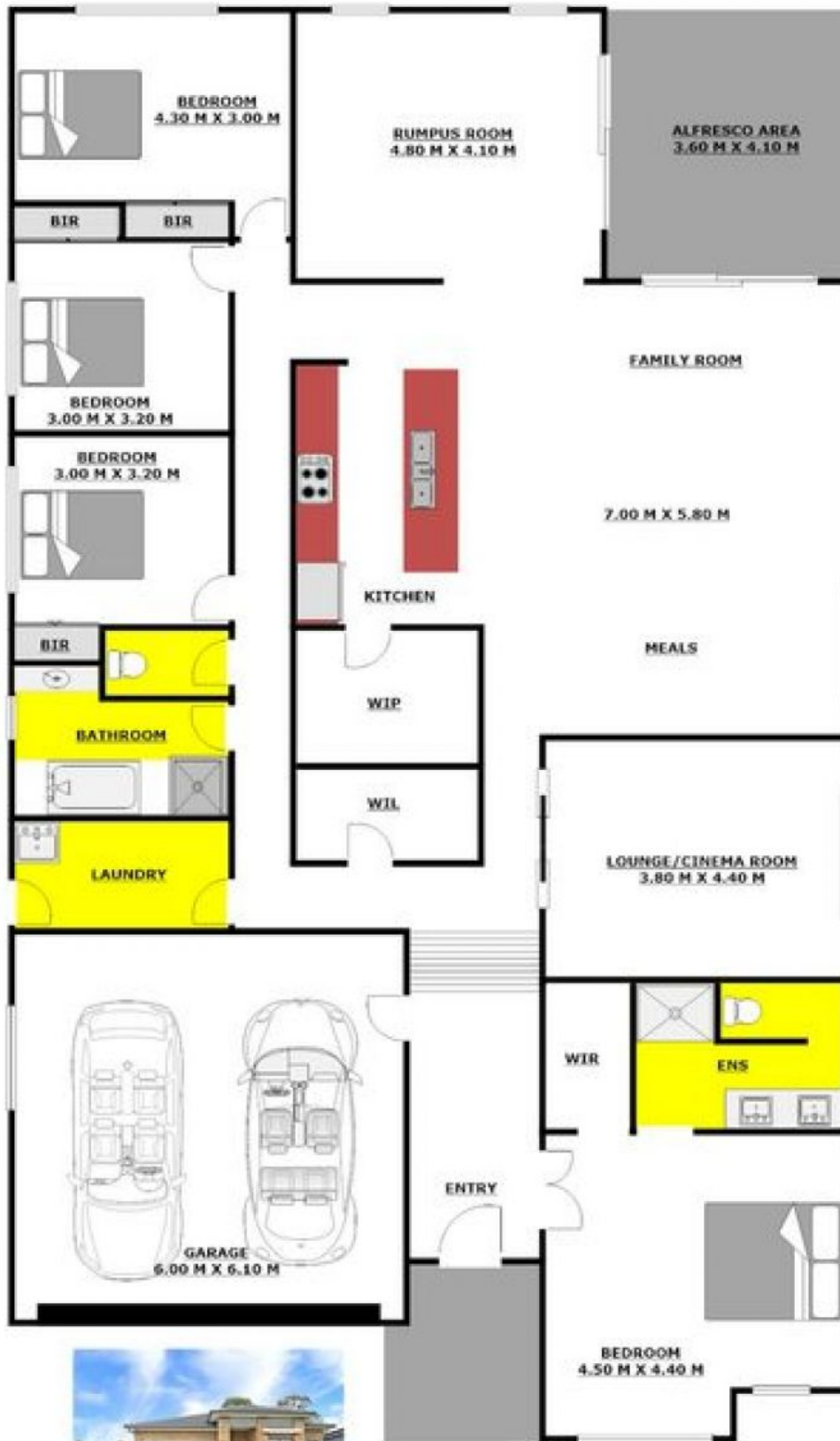
Upon entry it keeps getting better, a classy split level design with grand entrance and high ceiling. The central hub is featured by a well appointed kitchen with Caesar stone bench tops and an impressive walk in pantry. Adjacent is the large open plan day to day living and dining looking out to the alfresco and back yard. There are two other separate living areas including a lounge/cinema room and a rumpus room for the kids.



**Damian Sexton**  
**02 4732 5055**

[For full version visit the website](https://www.aitkenre.com.au)

DISCLAIMER: The information on this floor plan is provided by us in our capacity as a agent for the vendor, whose property we have listed for sale. Some information has been provided by a third party including the vendor concerned and has not been checked by us. We hold no liability or otherwise as to the accuracy. All prospective purchasers should make their own enquiries, and should receive their own independent advice from appropriately qualified persons, in respect to the property concerned.



**9-11 Harwood Circuit  
Glenmore Park NSW 2745**