



5 Ernstone Hill Close GLENMORE PARK NSW

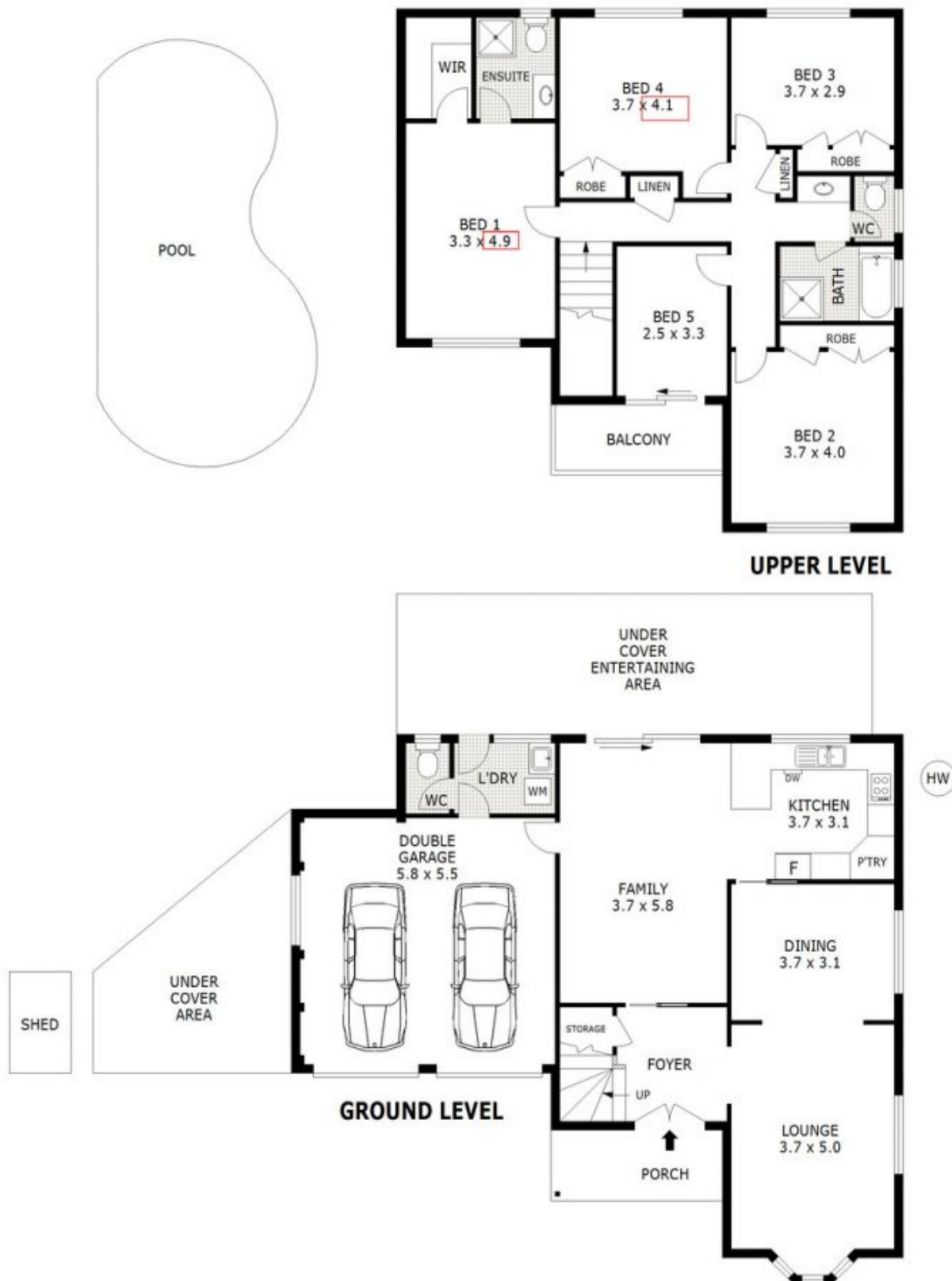
5  2  9 

Kristy Lees welcomes you to this beautiful home in a quiet cul de sac situated in an established and exclusive part of Glenmore Park. Upstairs you will find 4 well appointed double bedrooms, together with a fifth bedroom which opens onto a balcony with stunning and uninterrupted views of the Blue Mountains. All four double bedrooms are generous in size. The Master bedroom includes an en-suite and walk in robe. The three way bathroom, which has been kept in immaculate condition is conveniently positioned to the remaining bedrooms. Whilst the stairs and all bedrooms are carpeted the original floorboards underneath are of the highest quality and as new in condition.

Downstairs offers a formal lounge and formal dining room leading into an open timber kitchen complete with gas wall

Type : House
Land Size : 660 sqm
View : <https://www.aitkenre.com.au/8063658>

[For full version visit the website](https://www.aitkenre.com.au)



Scale in metres. Indicative only. Dimensions are approximate. All information contained herein is gathered from sources we believe to be reliable. However we cannot guarantee its accuracy and interested parties should rely on their own enquiries.

Ground Floor	- 82 m ²
First Floor	- 99 m ²
Garage	- 32 m ²
Porch	- 6 m ²
Balcony	- 6 m ²
Under Cover Area	- 53 m ²
Shed	- 3 m ²



5 Ernstine Hill Close, Glenmore Park