



4 Tench Place Glenmore Park NSW

3  1  2 

Nestled within the picturesque community of Glenmore Park, this charming 3-bedroom house offers the perfect blend of comfort and convenience. Boasting a spacious layout, each room is meticulously designed to create a warm and inviting atmosphere, ideal for both relaxation and entertaining guests.

With its prime location near parks, schools, and shopping centres, located in a quiet cul-de-sac moment from Mulgoa Road for easy M4 access this home presents a rare opportunity to embrace the coveted Glenmore Park lifestyle.

Don't miss your chance to make this exquisite residence your own! Contact us today to schedule a viewing and

Type : House
Price : \$ 805,000
Land Size : 376.5 sqm
View : <https://www.aitkenre.com.au/8063501>

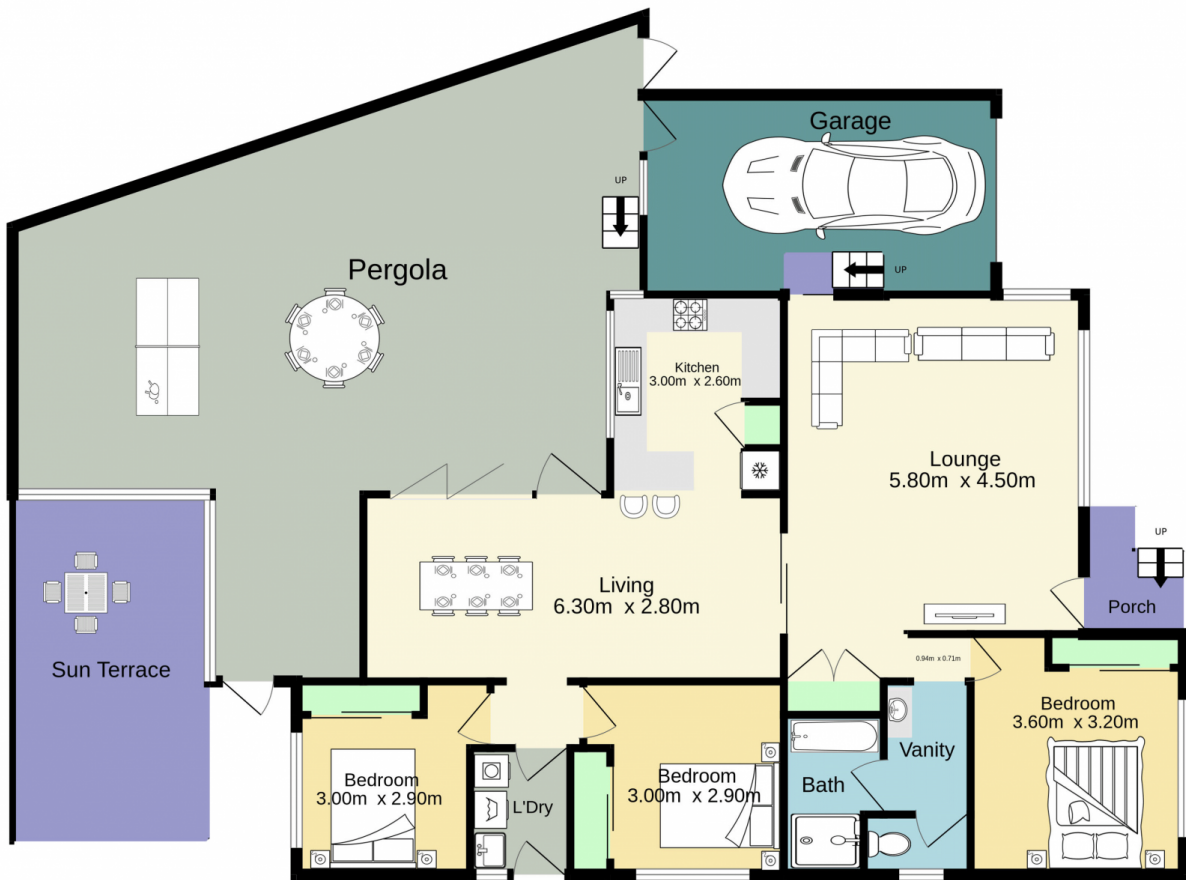


Diego Benitez
02 4733 6999



Connor Walker
02 4733 6999

[For full version visit the website](https://www.aitkenre.com.au)



Jim Aitken
Partners



TOTAL FLOOR AREA: 163.7 sq.m. approx.

Whilst every attempt has been made to ensure the accuracy of the floorplan contained here, measurements of doors, windows, rooms and any other items are approximate and no responsibility is taken for any error, omission or mis-statement. This plan is for illustrative purposes only and should be used as such by any prospective purchaser. The services, systems and appliances shown have not been tested and no guarantee as to their operability or efficiency can be given.

Made with Metropix ©2024