



6 Jillak Close Glenmore Park NSW

4  1  2 

Centrally located, with nearby amenities and parks, this property invites you to experience the best of both worlds. Ready for immediate move-in, this freshly renovated haven is more than a house; it's an invitation to start a new chapter of your life in a stylish and comfortable setting. Don't miss the chance to make this house your home sweet home call now to secure your tour and discover the perfect backdrop for the next exciting chapter of your life.

Type : House

Price : \$ 850,000

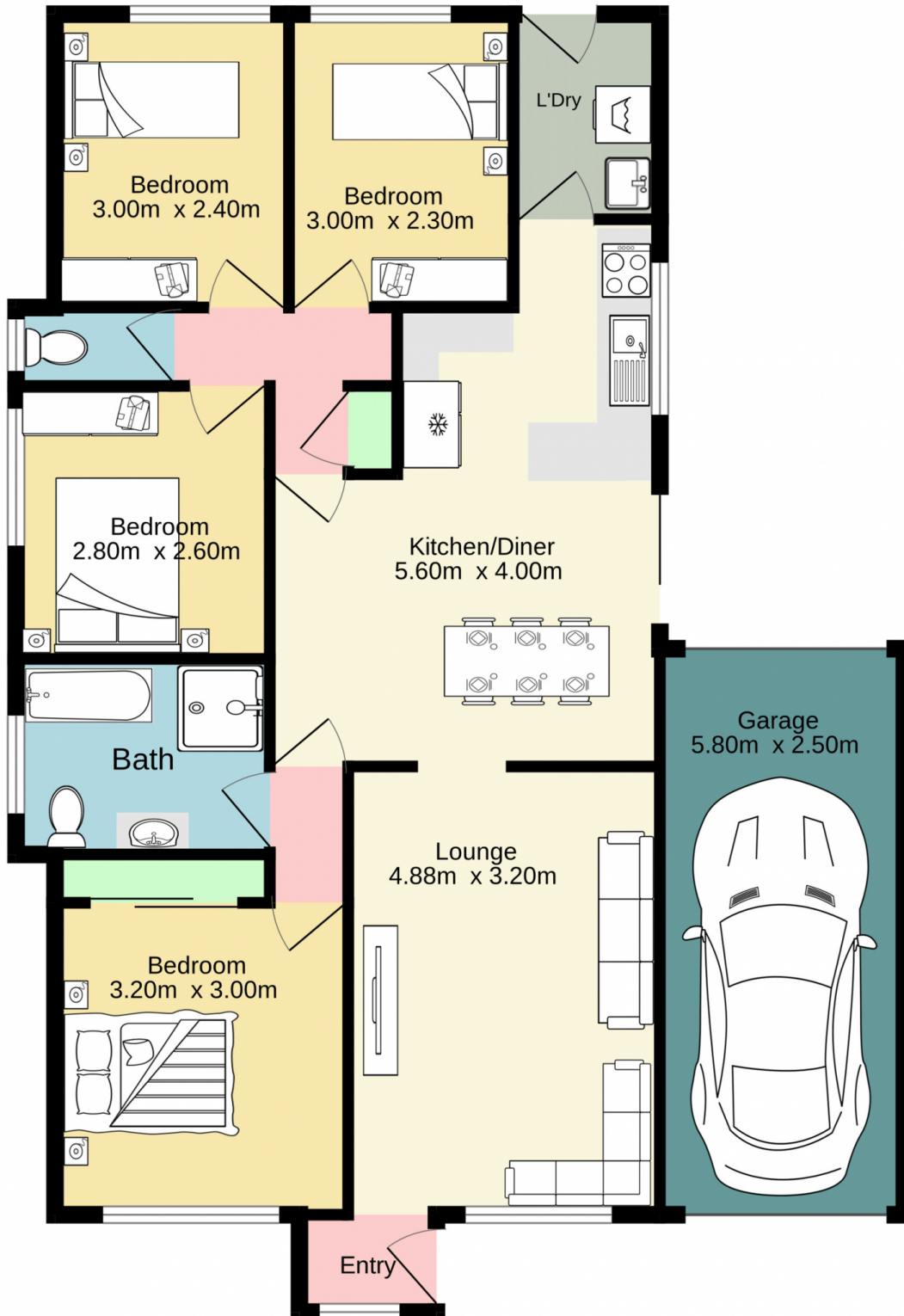
View : <https://www.aitkenre.com.au/8063492>

- + Recently renovated
- + Split-system air-conditioned
- + Drive-through garage
- + Separate living and dining
- + Tranquil cul-de-sac setting
- + Proximity to schools and shops



Diego Benitez
02 4733 6999

[For full version visit the website](https://www.aitkenre.com.au)



Jim Aitken
+ Partners



TOTAL FLOOR AREA : 94.3 sq.m. approx.

Whilst every attempt has been made to ensure the accuracy of the floorplan contained here, measurements of doors, windows, rooms and any other items are approximate and no responsibility is taken for any error, omission or mis-statement. This plan is for illustrative purposes only and should be used as such by any prospective purchaser. The services, systems and appliances shown have not been tested and no guarantee as to their operability or efficiency can be given.

Made with Metropix ©2024