

49 Waringa Crescent Glenmore Park NSW

4 🛏 2 🚿 4 🚗

Welcome to your dream family home in a peaceful suburb close to schools and shops! This spacious 4-bedroom, 2-bathroom house with a double garage is the perfect sanctuary for your loved ones. The bedrooms offer endless possibilities, and the two bathrooms provide convenience and relaxation. With a secure double garage, parking is a breeze, and there's extra storage space for all your belongings. Enjoy the family-friendly neighbourhood with top-notch schools nearby and convenient access to shops and amenities. Retreat to the quiet street, where peaceful evenings and stargazing adventures await you. Don't miss out on this incredible opportunity - call now to arrange a viewing and start a new chapter in your family's life!

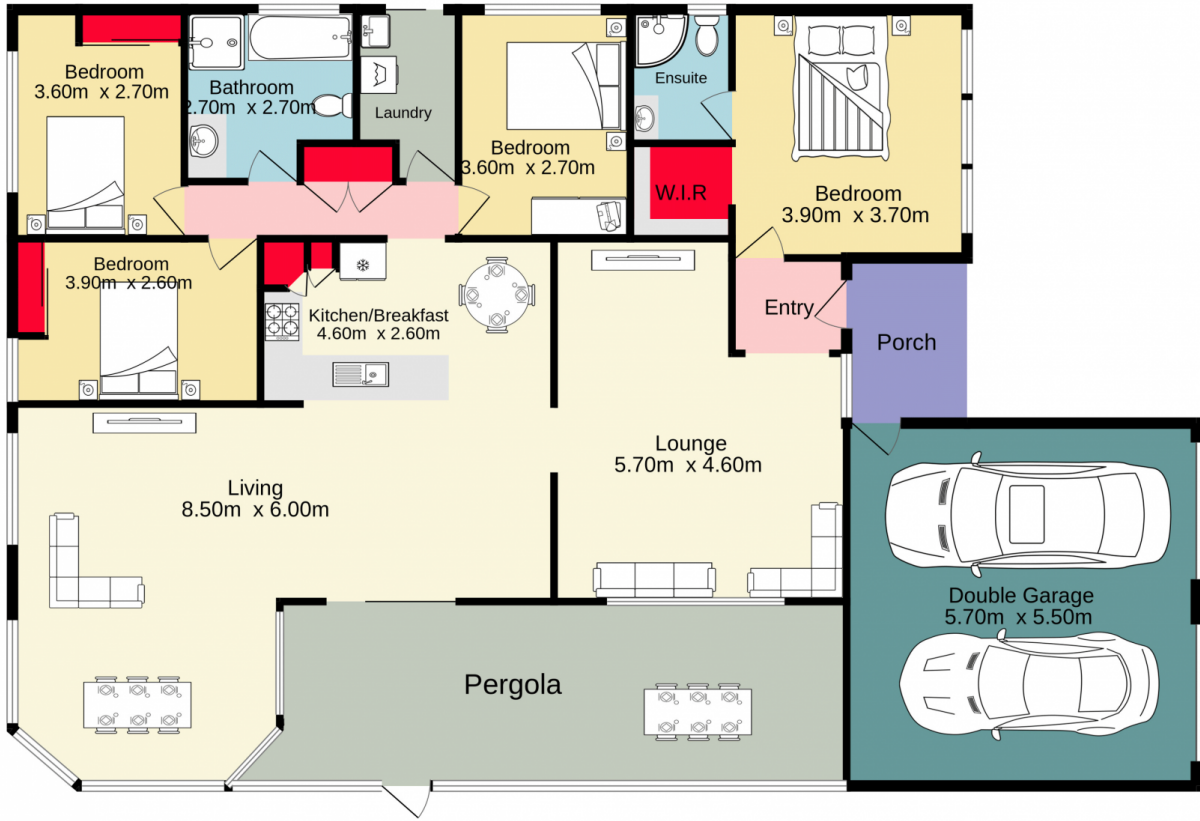
Type : House
Price : \$ 950,000
Land Size : 475 sqm
View : <https://www.aitkenre.com.au/8063477>



Diego Benitez
02 4733 6999

+ Spacious living areas, perfect for entertaining.

[For full version visit the website](https://www.aitkenre.com.au)



Jim Aitken
Partners



TOTAL FLOOR AREA: 198.3 sq.m. approx.

Whilst every attempt has been made to ensure the accuracy of the floorplan contained here, measurements of doors, windows, rooms and any other items are approximate and no responsibility is taken for any error, omission or mis-statement. This plan is for illustrative purposes only and should be used as such by any prospective purchaser. The services, systems and appliances shown have not been tested and no guarantee as to their operability or efficiency can be given.

Made with Metropix ©2023