



## 23 Waringa Crescent Glenmore Park NSW

4  3  4 

Check out this fabulous 4 bedroom double story house! With 3 bathrooms, a double garage and located in a great family orientated suburb, this house is perfect for creating new memories with your loved ones. Plus, with schools and shops only a hop, skip and a jump away, you'll have all the amenities you need right at your fingertips. But that's not all! With the new airport starting operation in 2026, you'll be able to jet off to your dream destination in no time. And the cherry on top? This house is freshly painted, so all you need to do is unpack and relax!

- + Ducted air conditioning
- + Established fruit trees, for picking fresh snacks right from your backyard
- + Double garage for your beloved cars

[For full version visit the website](https://www.aitkenre.com.au/8063473)

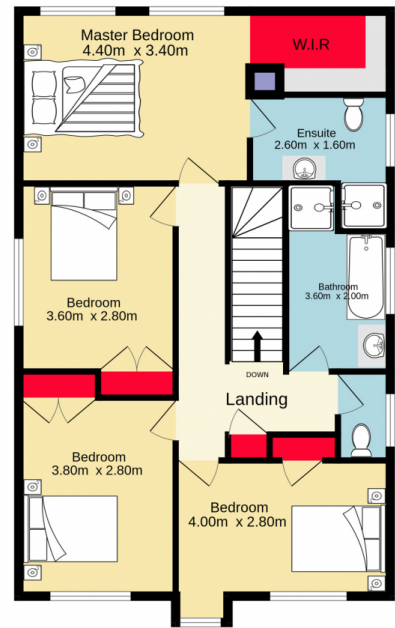
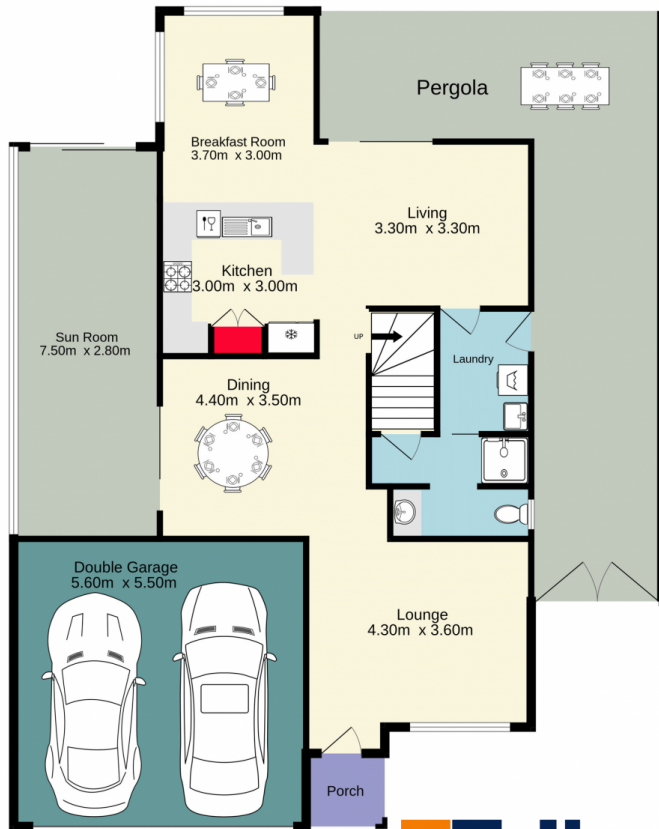
**Type** : House  
**Price** : \$ 1,040,000  
**Land Size** : 451 sqm  
**View** : <https://www.aitkenre.com.au/8063473>



**Diego Benitez**  
 02 4733 6999

Ground floor  
168.0 sq.m. approx.

1st floor  
79.7 sq.m. approx.



**Jim Aitken**  
Partners

TOTAL FLOOR AREA : 247.7 sq.m. approx.

Whilst every attempt has been made to ensure the accuracy of the floorplan contained here, measurements of doors, windows, rooms and any other items are approximate and no responsibility is taken for any error, omission or mis-statement. This plan is for illustrative purposes only and should be used as such by any prospective purchaser. The services, systems and appliances shown have not been tested and no guarantee as to their operability or efficiency can be given.  
Made with Metropix ©2023

