



## 22/12-14 Hope Street Penrith NSW

2  2  2 

Built for the savvy, first home buyer, investor or essential service worker. Located minutes from Penrith CBD, this near new unit offers a rare mix of neighbourhood charm with city connections. Nepean Hospital is only 120 metres from the apartment, Penrith Police, Fire Brigade and Ambulance Stations are within a ten-minute walk, and Kingswood train station is only a short walk away. With modern finishes, and open plan living this apartment effortlessly blends luxury with comfort, spacious interior features the best design and functionality.

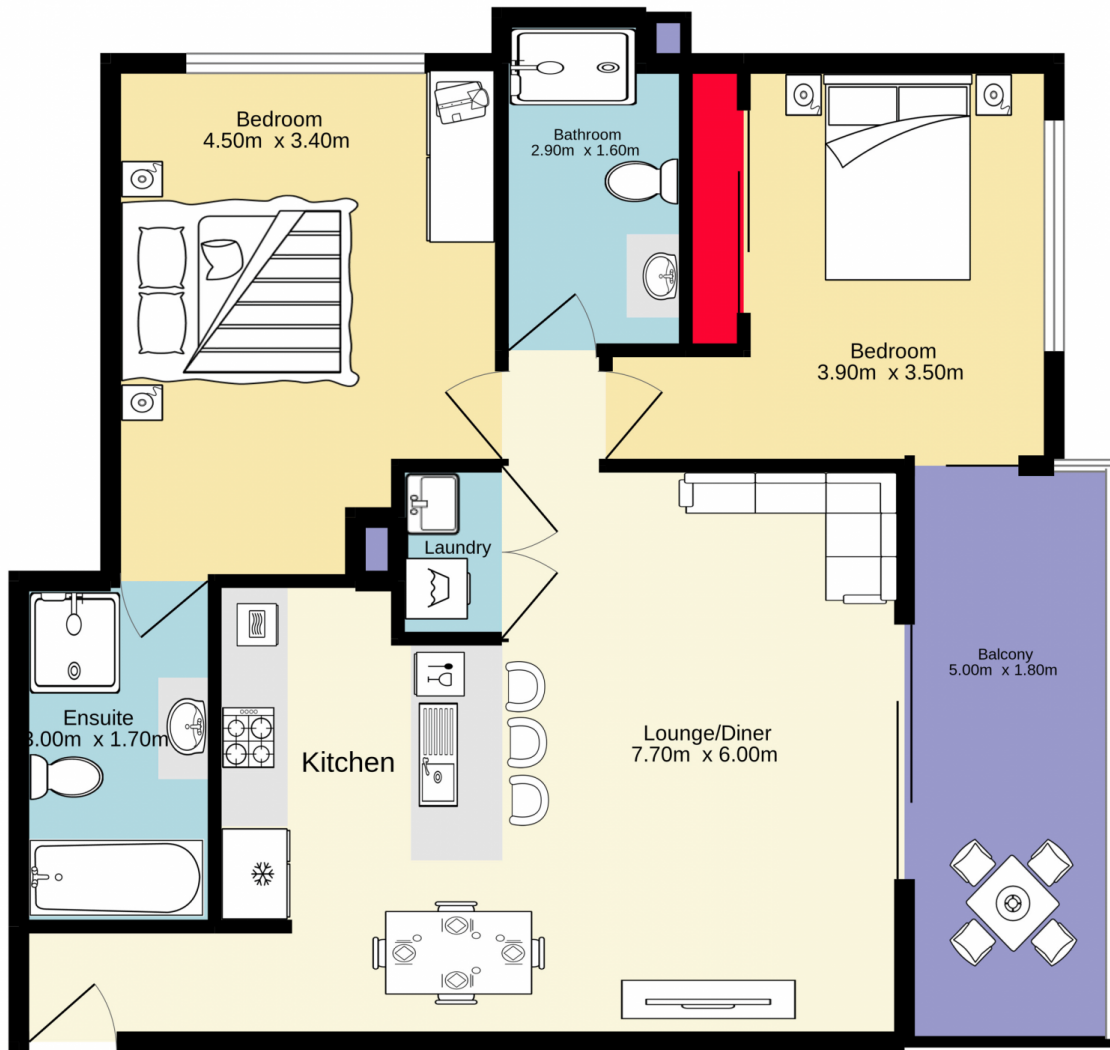
- + Two bedrooms with built in robe and ensuite to main
- + Modern bathroom with bathtub
- + Full kitchen with stone bench tops
- + Visitor parking with internal access to foyer

**Type** : Unit  
**Price** : \$ 495,000  
**View** : <https://www.aitkenre.com.au/8063461>



**Diego Benitez**  
**02 4733 6999**

[For full version visit the website](https://www.aitkenre.com.au)



**Jim Aitken**  
Partners

TOTAL FLOOR AREA : 66.7 sq.m. approx.

Whilst every attempt has been made to ensure the accuracy of the floorplan contained here, measurements of doors, windows, rooms and any other items are approximate and no responsibility is taken for any error, omission or mis-statement. This plan is for illustrative purposes only and should be used as such by any prospective purchaser. The services, systems and appliances shown have not been tested and no guarantee as to their operability or efficiency can be given.  
Made with Metropix ©2022