



378 Luxford Road Lethbridge Park NSW

3  1 

Position perfect, close to schools, reserves and sporting fields, transport and shops, this three bedroom home is a fantastic opportunity for investors, first home buyers or downsizers. Featuring a free flowing floor plan and all amenities close at hand, with rear yard, large sheds, teenage retreat and side access this opportunity is one not to miss.

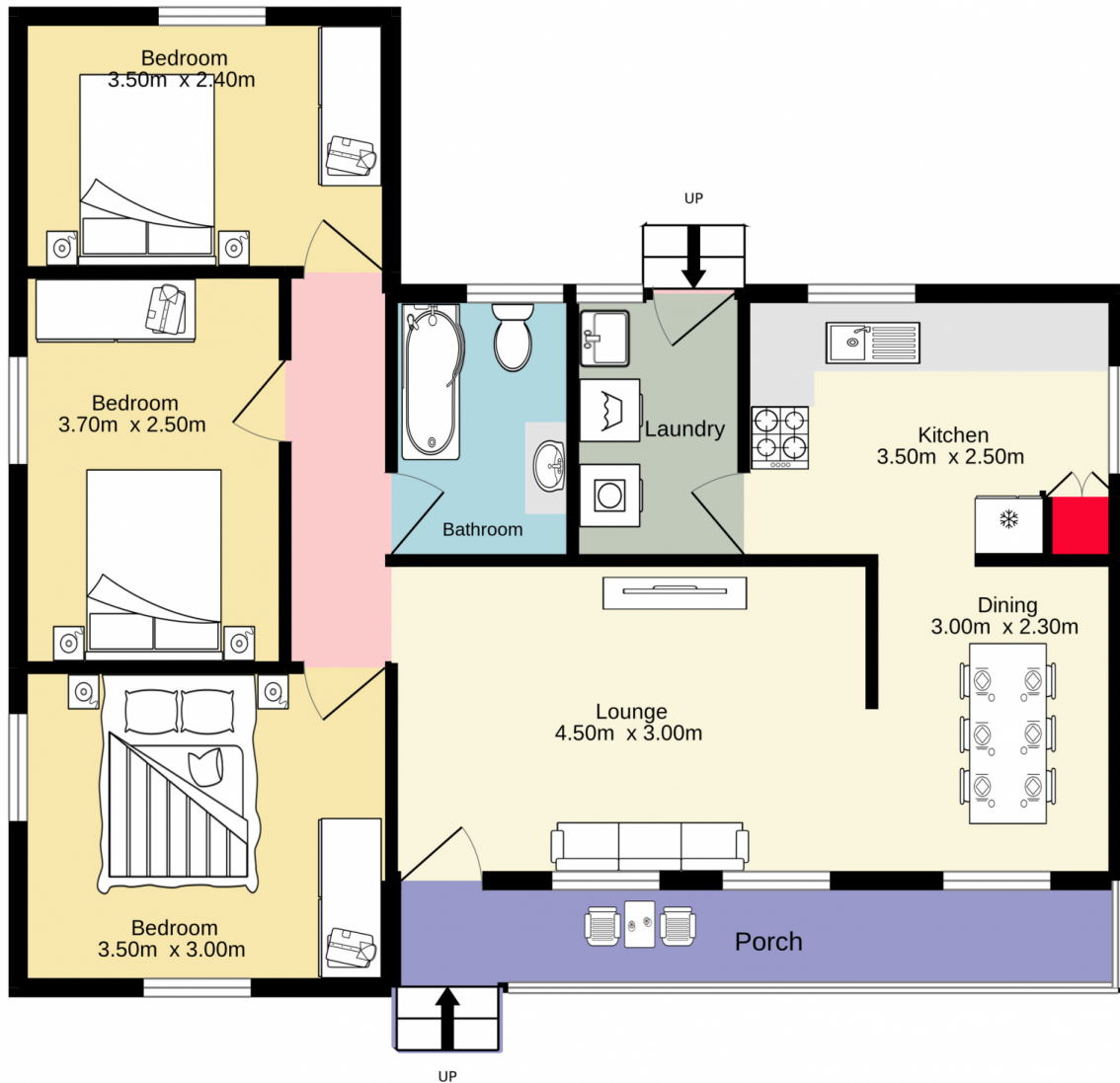
- + Separate dining and living areas
- + Sizeable bedrooms
- + Large shed
- + Teenage Retreat
- + Tiled and carpet throughout
- + Choice of 5 Schools within 1.4 kilometres
- + Family friendly backyard

Type : House
Price : \$ 600,000
Land Size : 569 sqm
View : <https://www.aitkenre.com.au/8063454>



Diego Benitez
 02 4733 6999

[For full version visit the website](https://www.aitkenre.com.au)



Jim Aitken
Partners



TOTAL FLOOR AREA : 69.8 sq.m. approx.

Whilst every attempt has been made to ensure the accuracy of the floorplan contained here, measurements of doors, windows, rooms and any other items are approximate and no responsibility is taken for any error, omission or mis-statement. This plan is for illustrative purposes only and should be used as such by any prospective purchaser. The services, systems and appliances shown have not been tested and no guarantee as to their operability or efficiency can be given.
Made with Metropix ©2022