



**4 Silverdale Road Wallacia NSW**

3  1 

Offered for the first time to the market, this three bedroom beauty is situated in an outstanding location and walking distance to the local primary school and the Nepean River. Centrally located to the major shopping precincts of Penrith and Narellan and with the new international airport only 12 minutes drive, this opportunity is too good to miss.

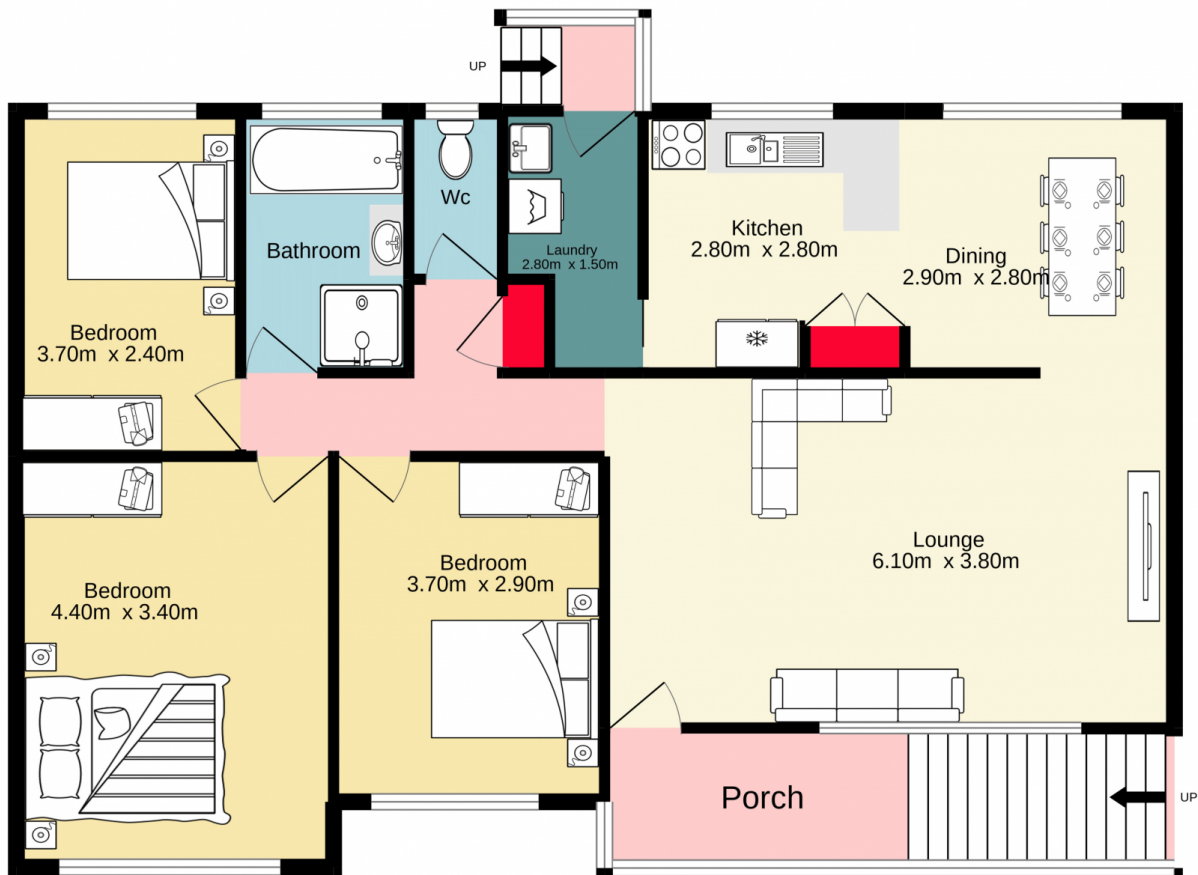
**Type** : House  
**Price** : \$ 750,000  
**View** : <https://www.aitkenre.com.au/8063448>

- + Prime location
- + Land size 743sqm (approx.) with approx. 26m frontage
- + Walking distance to schools & River
- + Under house storage
- + Split system air conditioning
- + Shutters to front windows
- + Freshly painted



**Diego Benitez**  
**02 4733 6999**

[For full version visit the website](https://www.aitkenre.com.au)



Whilst every attempt has been made to ensure the accuracy of the floorplan contained here, measurements of doors, windows, rooms and any other items are approximate and no responsibility is taken for any error, omission or mis-statement. This plan is for illustrative purposes only and should be used as such by any prospective purchaser. The services, systems and appliances shown have not been tested and no guarantee as to their operability or efficiency can be given.  
Made with Metropix ©2022