



48 Shearwater Drive Glenmore Park NSW

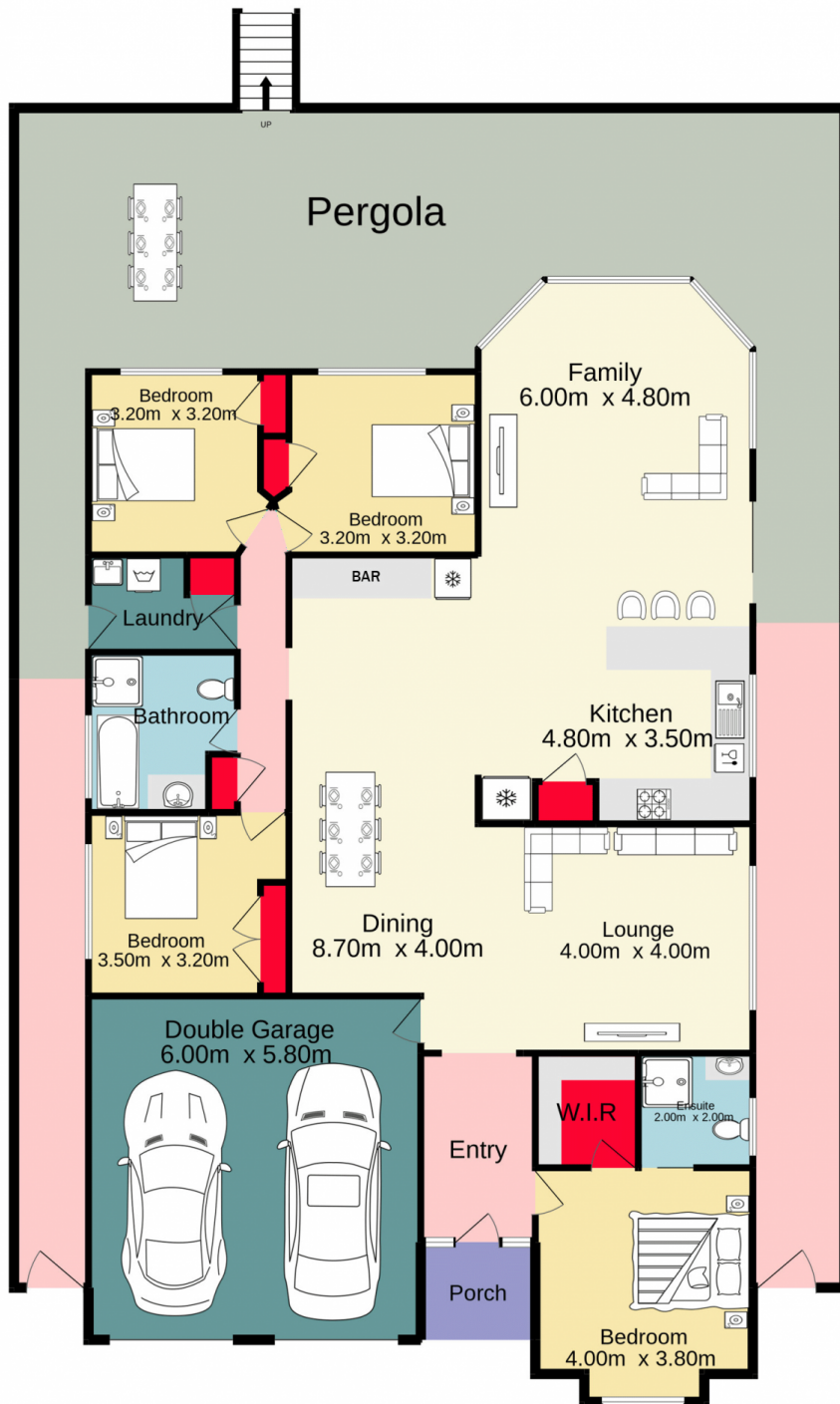
4  2  4 

This expansive single level home is perfect for growing families looking for a modern lifestyle. Impeccably maintained, this home is ideal for families who love to entertain. Offering two large living areas, a wonderful open plan kitchen that connects to the dining area, which is large enough to accommodate a twelve seated dining table, built in bar and a seamless flow out to the backyard. Entertaining will be a breeze with the spacious outdoor area and inground swimming pool. Enviously positioned in the heart of Glenmore Park, you are within close proximity to Glenmore Park Shopping Mall, buses, quality local schools, preschools, family friendly parks and so much more!

+ Master bedroom with stylish ensuite

[For full version visit the website](https://www.aitkenre.com.au/8063445)

Type : House
Price : \$ 1,250,000
Land Size : 548 sqm
View : <https://www.aitkenre.com.au/8063445>



Jim Aitken
+ Partners

TOTAL FLOOR AREA : 310.7 sq.m. approx.

Whilst every attempt has been made to ensure the accuracy of the floorplan contained here, measurements of doors, windows, rooms and any other items are approximate and no responsibility is taken for any error, omission or mis-statement. This plan is for illustrative purposes only and should be used as such by any prospective purchaser. The services, systems and appliances shown have not been tested and no guarantee as to their operability or efficiency can be given.

Made with Metropix ©2022

