

504/240-250B Great Western Highway Kingswood NSW

2 **1** **1**

Located in the heart of Kingswood this near new unit is walking distance to Nepean Hospital, multiple shops, cafes & the train station is directly across the road. Positioned on the 5th floor in a secure complex with lift access this property offers low maintenance no fuss living with a touch of class.

Type : Unit

Price : \$ 490,000

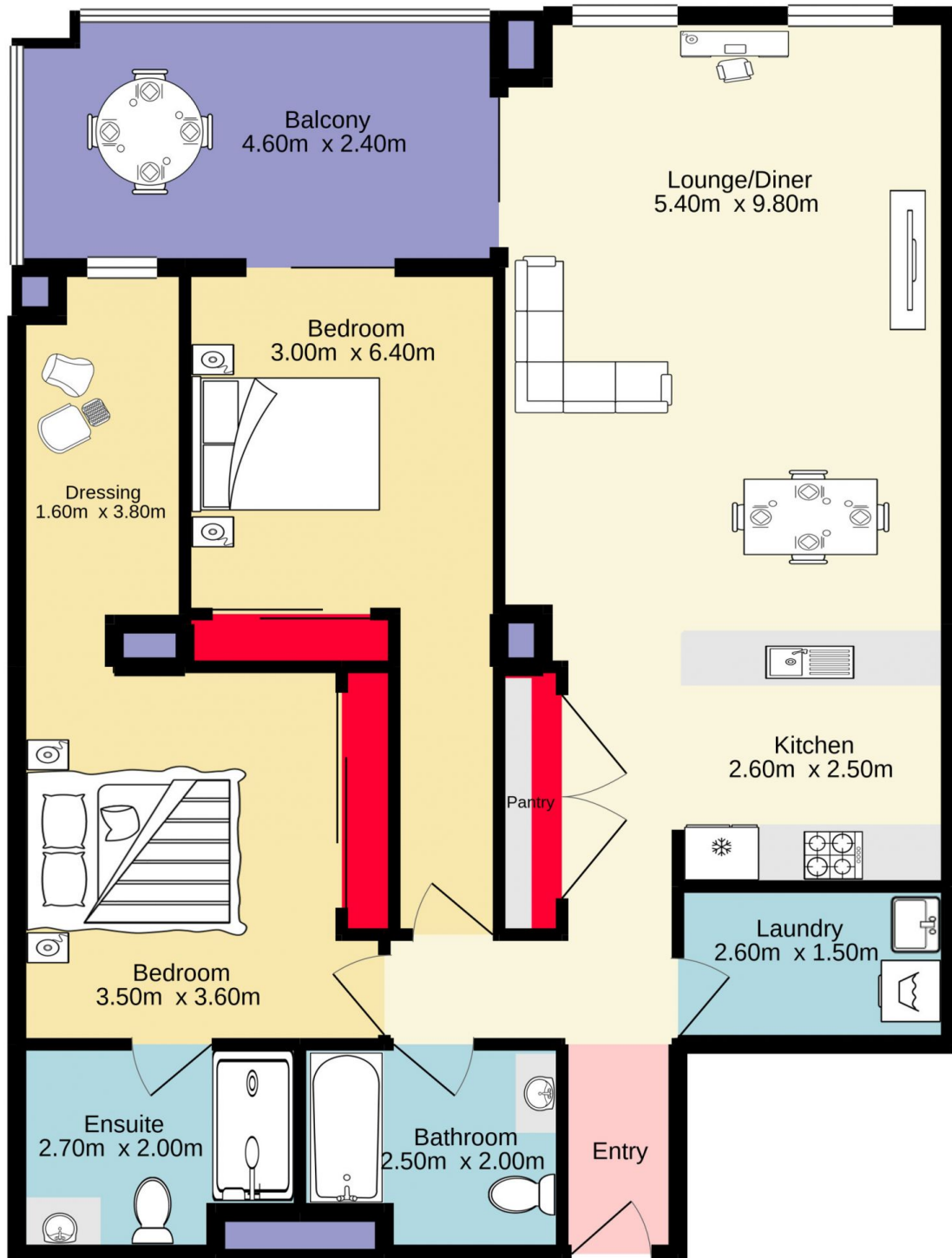
View : <https://www.aitkenre.com.au/8063439>

Property features

- + Modern kitchen with stone benchtops, gas cooking & large pantry
- + Open plan living/dining with reverse cycle air-conditioning & access to covered balcony
- + Master bedroom with spacious ensuite, mirrored built in robes & retreat area ideal for a home office

[For full version visit the website](https://www.aitkenre.com.au/8063439)

<https://www.aitkenre.com.au>



TOTAL FLOOR AREA : 87.1 sq.m. approx.

Whilst every attempt has been made to ensure the accuracy of the floorplan contained here, measurements of doors, windows, rooms and any other items are approximate and no responsibility is taken for any error, omission or mis-statement. This plan is for illustrative purposes only and should be used as such by any prospective purchaser. The services, systems and appliances shown have not been tested and no guarantee as to their operability or efficiency can be given.
Made with Metropix ©2021