



34 Manifold Crescent Glenmore Park NSW

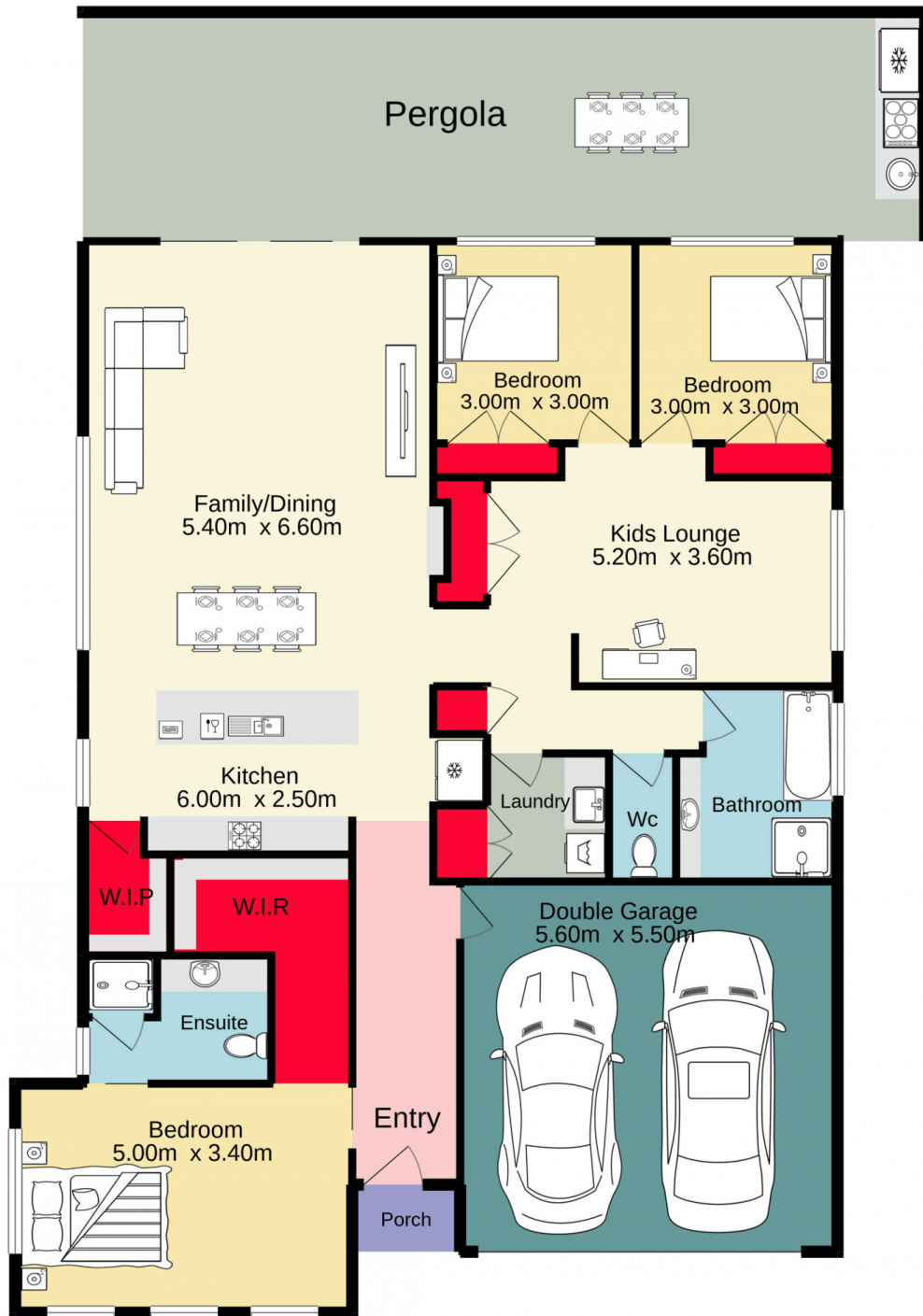
3  2  4 

This is a must see stunning single level home, with three large bedrooms, a light filled kitchen, large dining and living area, plus a separate family/rumpus room. Combine this with the outdoor covered entertaining area which allows the inside living to flow outside. You will be proud to bring your family and friends to this great entertainer.

- + Envious location | sprawling corner block position, easy access to M4
- + The comfort of ducted air conditioning throughout
- + Sleek kitchen with breakfast bar, upgraded appliances & gas cooking
- + Three sizeable bedrooms, master with walk in robe & ensuite
- + Large outdoor covered entertaining area

Type : House
Price : \$ 1,020,100
Land Size : 651 sqm
View : <https://www.aitkenre.com.au/8063435>

[For full version visit the website](https://www.aitkenre.com.au/8063435)



Jim Aitken
Partners

TOTAL FLOOR AREA : 216.0 sq.m. approx.

Whilst every attempt has been made to ensure the accuracy of the floorplan contained here, measurements of doors, windows, rooms and any other items are approximate and no responsibility is taken for any error, omission or mis-statement. This plan is for illustrative purposes only and should be used as such by any prospective purchaser. The services, systems and appliances shown have not been tested and no guarantee as to their operability or efficiency can be given.

Made with Metropix ©2021

