



31 Boldero Crescent Glenmore Park NSW

5  4  4 

Beautifully presented and situated within a peaceful enclave in the ever popular suburb of Glenmore Park, this stylish residence promises a family lifestyle without compromise in a superbly convenient location. Showcasing elegantly appointed high end designer fittings which includes an awe-inspiring well appointed gourmet kitchen that is sure to bring out your inner chef, and combines with spacious open plan multiple living zones flowing seamlessly to a low maintenance outdoor entertaining space. If you're looking for a large family home that offers something very special, then this residence should be at the very top of your shopping list.

- + Five spacious bedrooms
- + Four bathrooms

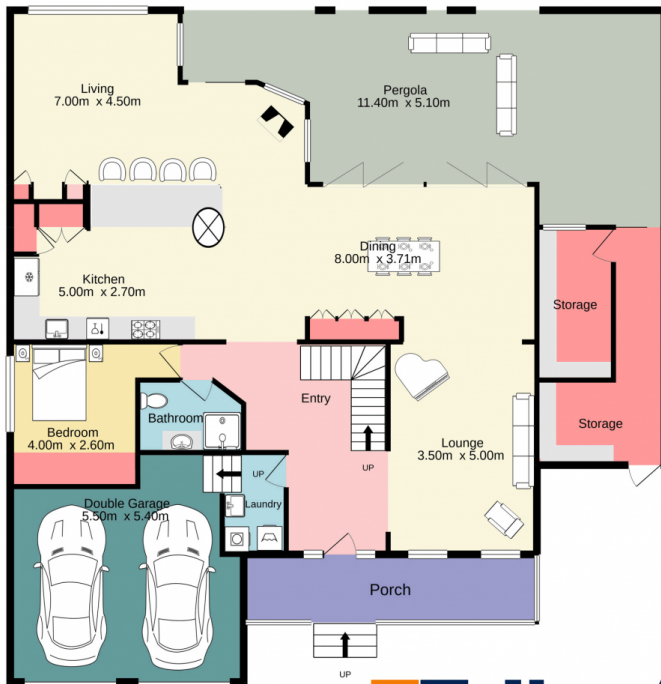
[For full version visit the website](https://www.aitkenre.com.au/8063427)

Type : House
Price : \$ 1,200,000
Building Size : 316 sqm
Land Size : 540 sqm
View : <https://www.aitkenre.com.au/8063427>

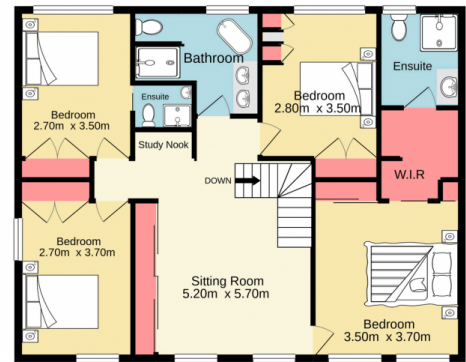


Diego Benitez
02 4733 6999

Ground floor
203.7 sq.m. approx.



1st floor
85.6 sq.m. approx.



Jim Aitken
Partners

TOTAL FLOOR AREA : 289.3 sq.m. approx.

Whilst every attempt has been made to ensure the accuracy of the floorplan contained here, measurements of doors, windows, rooms and any other items are approximate and no responsibility is taken for any error, omission or mis-statement. This plan is for illustrative purposes only and should be used as such by any prospective purchaser. The services, systems and appliances shown have not been tested and no guarantee as to their operability or efficiency can be given.
Made with Metropix ©2021

