




4 Mandalong Terrace Glenmore Park NSW

4  2  8 

This proud and architecturally designed masterpiece delivers incredible entertaining and living set across two levels of space, design and functionality.

A double door entrance, wide hallway and soaring ceilings invite you into this abode where the multiple down stairs living areas flow seamlessly to create the perfect space to live, work and entertain.

At the top of the staircase you will find an additional living area and the bedrooms of the home. The master bedroom is incredible in size and delivers a wonderfully spacious retreat/nursery, expansive walk in wardrobe and an amazing ensuite with double vanity, spa bath & plenty of storage.

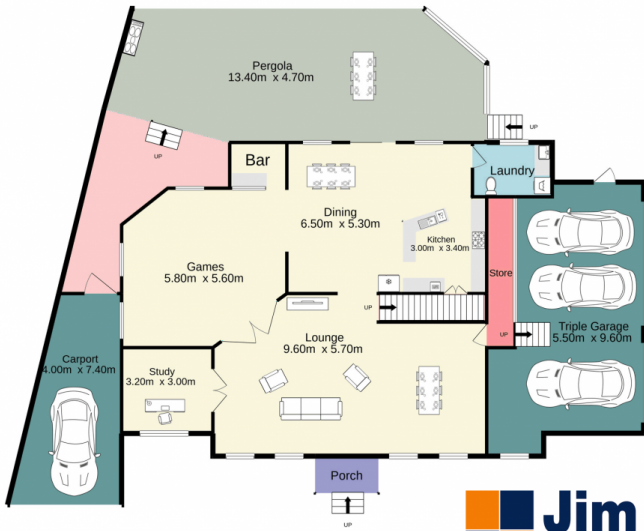
Type : House
Price : \$ 1,360,000
Land Size : 706 sqm
View : <https://www.aitkenre.com.au/8063423>



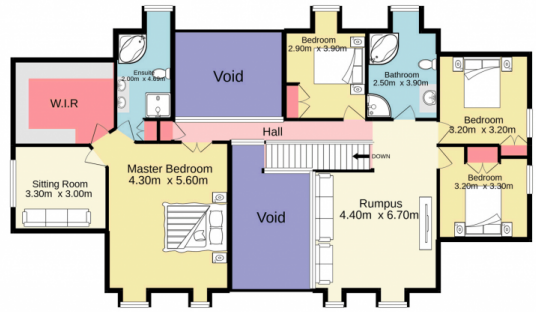
Diego Benitez
 02 4733 6999

[For full version visit the website](https://www.aitkenre.com.au)

Ground floor
281.9 sq.m. approx.



1st floor
124.4 sq.m. approx.



TOTAL FLOOR AREA: 406.3 sq.m. approx.

Whilst every attempt has been made to ensure the accuracy of the floorplan contained here, measurements of doors, windows, rooms and any other items are approximate and no responsibility is taken for any error, omission or mis-statement. This plan is for illustrative purposes only and should be used as such by any prospective purchaser. The services, systems and appliances shown have not been tested and no guarantee as to their operability or efficiency can be given.
Made with Metropix ©2021

