



### 38 Bija Drive Glenmore Park NSW

3  2  2 

Look and be quick! This neat three bedroom home located in the heart of Glenmore Park is a must see. Perfect for the first home buyer to start making memories or a great investment opportunity. Featuring an elegant kitchen with an island that opens up to the outdoor entertaining area, formal dining and lounge, three bedrooms, with ensuite to the main, alarm system and single garage with remote door. Hurry you must be quick.

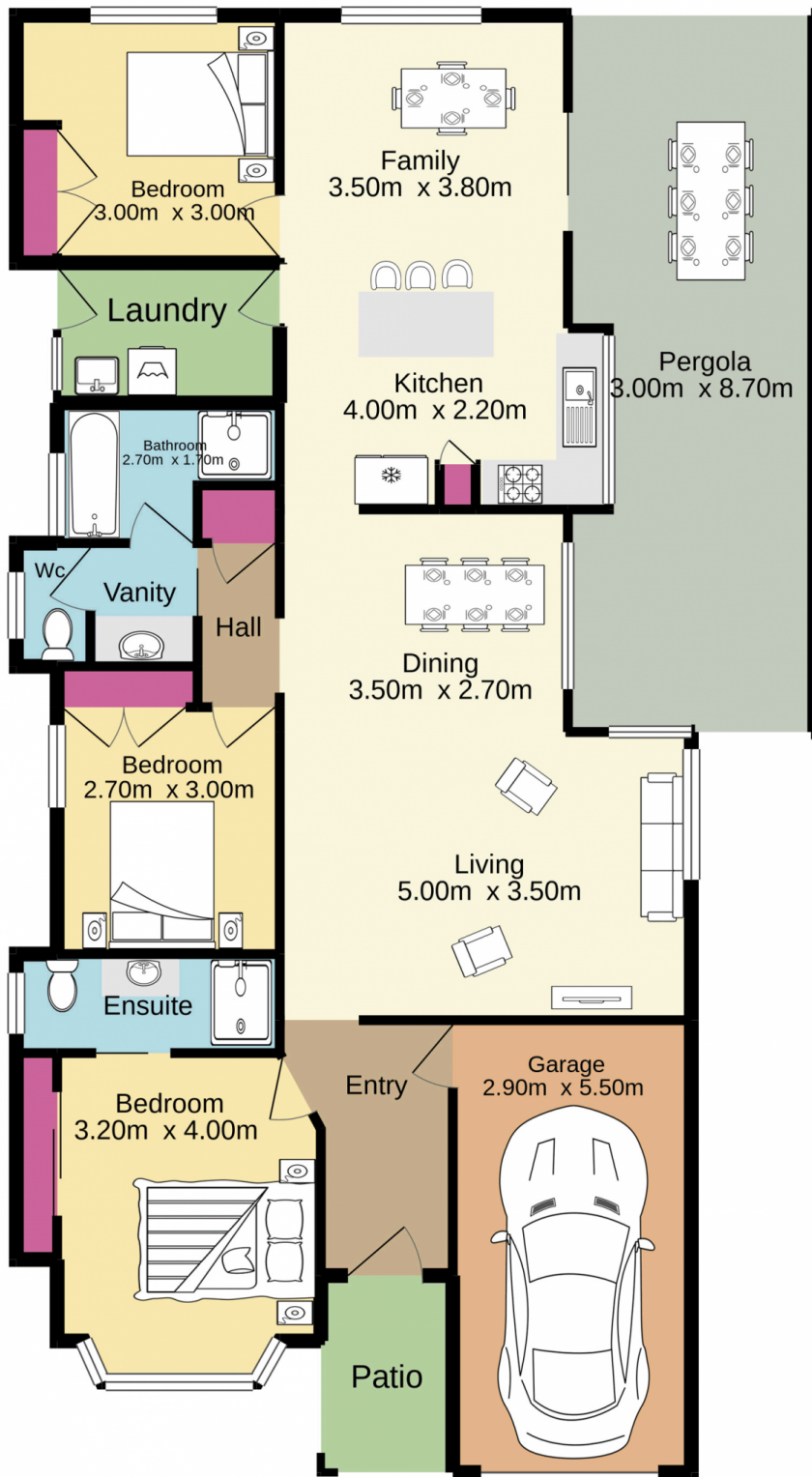
- + Main bedroom with ensuite
- + Second bathroom with separate toilet
- + Two internal living areas
- + Outdoor entertaining area
- + 5 Schools within a kilometre
- + Medical centre and bus stop on the street

[For full version visit the website](https://www.aitkenre.com.au/8063407)

**Type** : House  
**Price** : \$ 750,738  
**Building Size** : 400 sqm  
**Land Size** : 325 sqm  
**View** : <https://www.aitkenre.com.au/8063407>



**Diego Benitez**  
**02 4733 6999**



 **Jim Aitken**  
Partners

TOTAL FLOOR AREA : 140.8 sq.m. approx.

Whilst every attempt has been made to ensure the accuracy of the floorplan contained here, measurements of doors, windows, rooms and any other items are approximate and no responsibility is taken for any error, omission or mis-statement. This plan is for illustrative purposes only and should be used as such by any prospective purchaser. The services, systems and appliances shown have not been tested and no guarantee as to their operability or efficiency can be given.  
Made with Metropix ©2021