



## 51 Shearwater Drive Glenmore Park NSW

5  3  3 

If you have been tirelessly searching for your perfect family home but feel there is always a compromise than this home will be your families dream come true - it is the complete package! Featuring four enormous bedrooms plus study, the main with ensuite, walk-in robe plus an extra mirrored built-in, four great sized living areas. A stunning kitchen, powder room, large laundry, 2.5 car garaging with auto doors, ducted air-conditioning and a covered entertaining area that will cater for the largest of gatherings, a beautiful in-ground pool and still plenty of grassed yard as well. Immaculately maintained and presented, it is impossible not to be impressed by this quality family home.

We are rolling out our welcome mat Open homes are back with the NSW State Government announcing the ban has

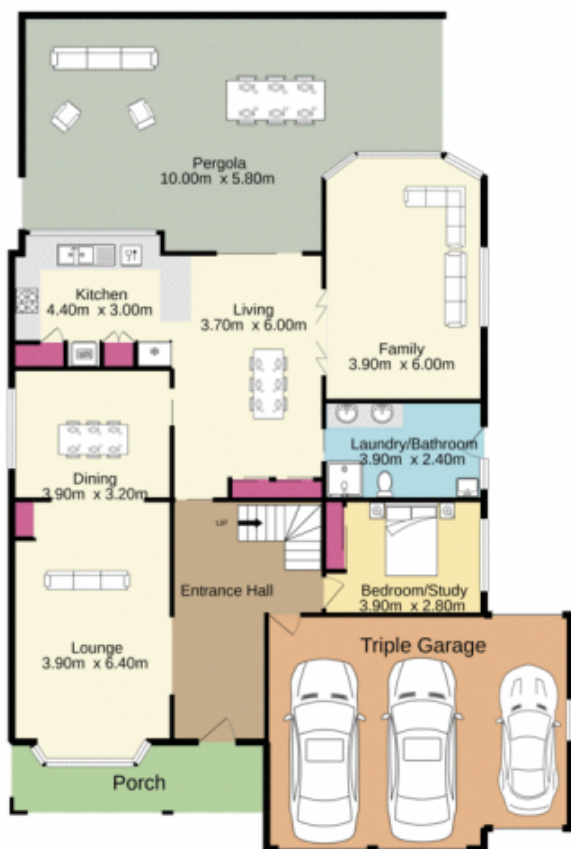
[For full version visit the website](https://www.aitkenre.com.au/8063405)

**Type** : House  
**Price** : \$ 1,160,000  
**Land Size** : 669 sqm  
**View** : <https://www.aitkenre.com.au/8063405>

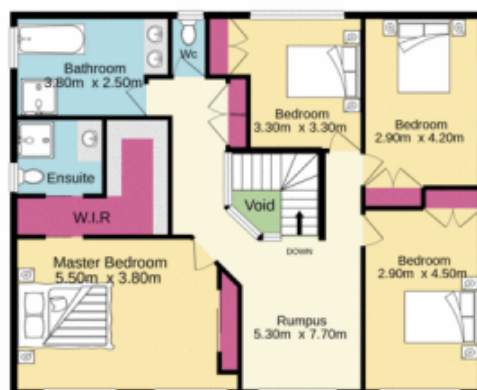


**Diego Benitez**  
02 4733 6999

Ground floor



1st floor



Whilst every attempt has been made to ensure the accuracy of the floorplan contained here, measurements of doors, windows, rooms and any other items are approximate and no responsibility is taken for any error, omission or mis-statement. This plan is for illustrative purposes only and should be used as such by any prospective purchaser. The services, systems and appliances shown have not been tested and no guarantee as to their operability or efficiency can be given.  
Made with Metropix 6/2021