



6 Litoria Place Glenmore Park NSW

3  2  2 

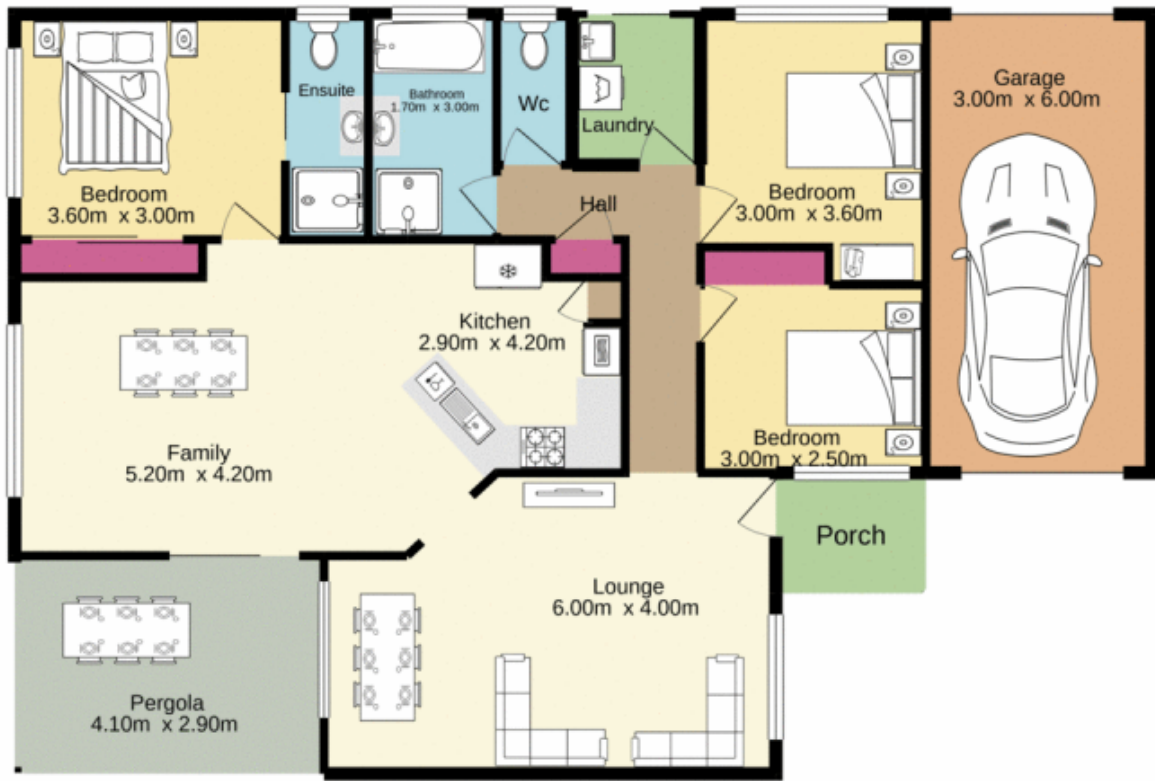
Tucked away in a quiet cul-de-sac in the Woodlands Estate, this refreshed three bedroom haven offers privacy, space and seclusion. With a free flowing floor plan and all amenities close at hand, this property will appeal to first home buyers, families and investors alike.

Type : House
Price : \$ 750,000
Land Size : 481 sqm
View : <https://www.aitkenre.com.au/8063399>

Property features:

- + Modern central kitchen with ample storage, gas cooking & stainless-steel appliances
- + Roomy living areas with reverse cycle air-conditioning
- + Sizeable bedrooms with ceiling fans. Built in robe & ensuite to main
- + Internal laundry
- + Tiled and floor boards throughout

[For full version visit the website](https://www.aitkenre.com.au)



Jim Aitken
+
Partners



Whilst every attempt has been made to ensure the accuracy of the floorplan contained here, measurements of doors, windows, rooms and any other items are approximate and no responsibility is taken for any error, omission or mis-statement. This plan is for illustrative purposes only and should be used as such by any prospective purchaser. The services, systems and appliances shown have not been tested and no guarantee as to their operability or efficiency can be given.
Made with Metropix ©2021