



13 Kumbara Close Glenmore Park NSW

3  1  2 

Positioned well and close to schools, buses and shops, this three bedroom south facing home is a fantastic opportunity for investors, first home buyers or downsizers. With a free flowing floor plan, ducted air, rear yard and separate toilet to beds 2 and 3, this property will not last long.

Type : House

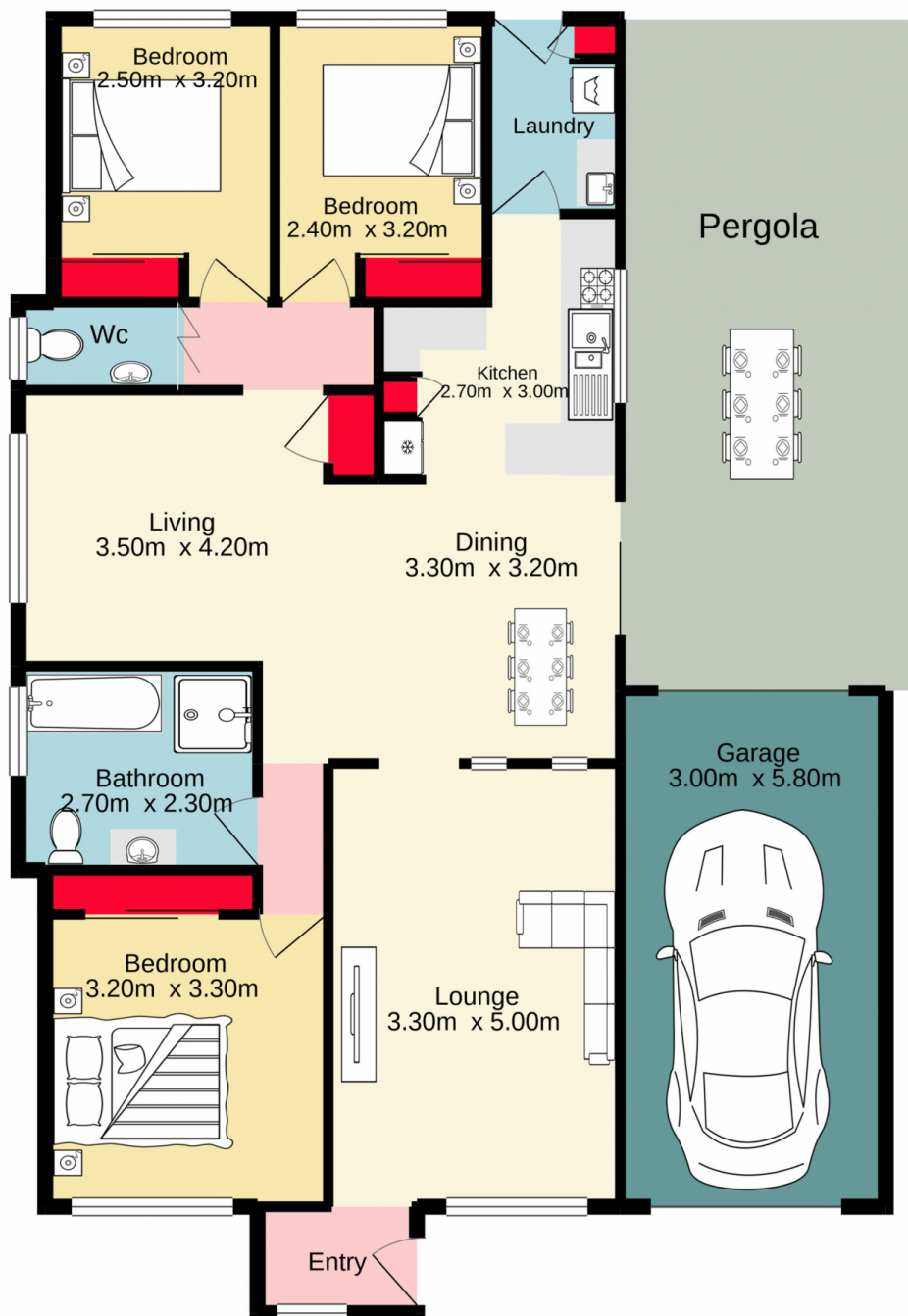
Price : \$ 835,500

View : <https://www.aitkenre.com.au/8063395>

- + Separate dining room | two living areas
- + Sizeable bedrooms with ceiling fans. Built in robes
- + Ducted air conditioning
- + Motorised shutters in the living areas & bedrooms.
- + Tiled and carpet throughout
- + Single lock up garage with drive through capability
- + Gas cooking
- + Family friendly backyard
- + Choice of 5 schools within 1 kilometre and easy access

[For full version visit the website](https://www.aitkenre.com.au)

<https://www.aitkenre.com.au>



 **Jim Aitken**
Partners

TOTAL FLOOR AREA : 134.1 sq.m. approx.

Whilst every attempt has been made to ensure the accuracy of the floorplan contained here, measurements of doors, windows, rooms and any other items are approximate and no responsibility is taken for any error, omission or mis-statement. This plan is for illustrative purposes only and should be used as such by any prospective purchaser. The services, systems and appliances shown have not been tested and no guarantee as to their operability or efficiency can be given.

Made with Metropix ©2021

