






21 Harwood Circuit Glenmore Park NSW

5  2  4 

This well presented home offers you a great location with a stylish single level design, a large yard area and well maintained gardens.

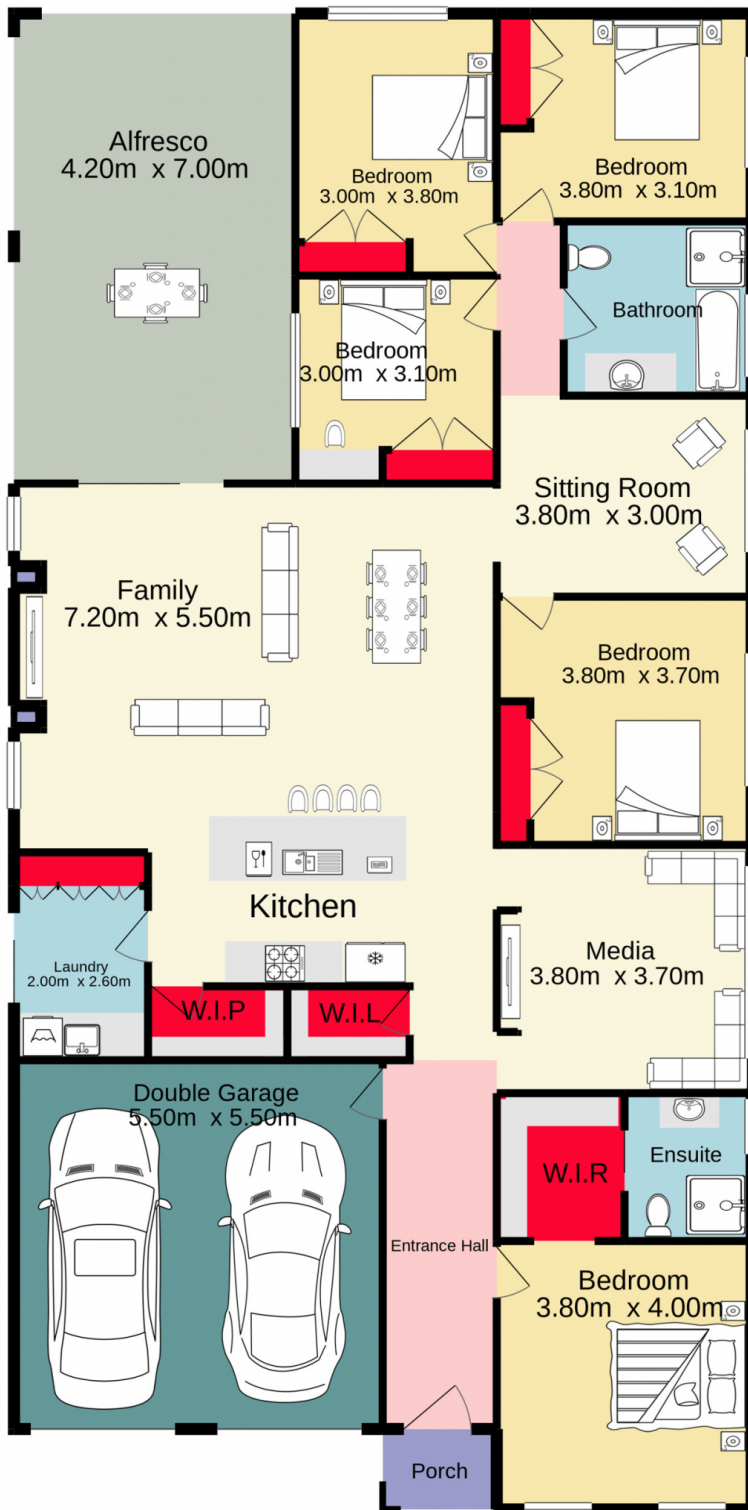
This modern home has a large cooks kitchen and is complimented with a large island and gas cook-top, stone bench tops and a large walk-in pantry. This area opens to a spacious living/dining area.

5 large bedrooms, with the possibility of a sixth bedroom or study area. The master suite has a walk through robe and an ensuite.

The living area opens onto a full length undercover patio overlooking a large rear yard which has development

Type : House
Price : \$ 1,375,000
Land Size : 746 sqm
View : <https://www.aitkenre.com.au/8063393>

[For full version visit the website](https://www.aitkenre.com.au)



Jim Aitken
+ Partners

TOTAL FLOOR AREA : 236.3 sq.m. approx.

Whilst every attempt has been made to ensure the accuracy of the floorplan contained here, measurements of doors, windows, rooms and any other items are approximate and no responsibility is taken for any error, omission or mis-statement. This plan is for illustrative purposes only and should be used as such by any prospective purchaser. The services, systems and appliances shown have not been tested and no guarantee as to their operability or efficiency can be given.
Made with Metropix ©2021