






16 Roseville Terrace Glenmore Park NSW

5  2  4 

Are you looking for a low maintenance home that you can comfortably move in to straight away and yet still put your personal touch to make it your own? Then look no further! This home has tonnes to offer, including five bedrooms, all with built-ins and main bedroom with walk in wardrobe and ensuite. Study, formal and casual living areas, double garage, outdoor entertaining areas, and plenty more. Located in a sought after location with close proximity to schools and shops, this home will comfortably meet all the demands of the growing family.

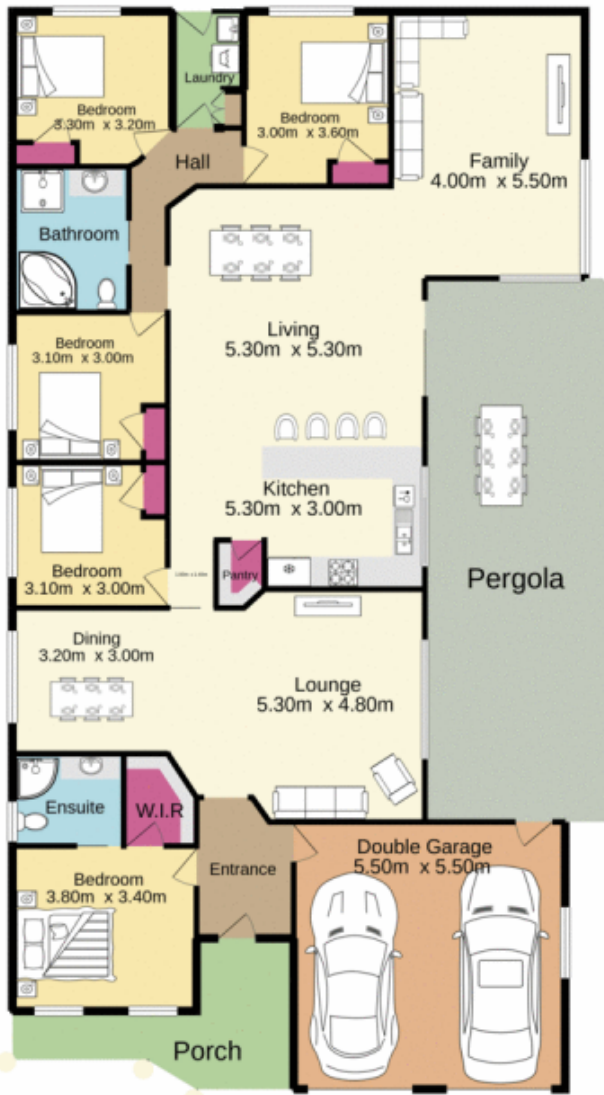
- + East facing with gas cooking
- + Three living areas, including media room
- + Double garage
- + 701m² (approx.) block

[For full version visit the website](https://www.aitkenre.com.au/8063374)

Type : House
Price : \$ 870,000
Land Size : 701 sqm
View : <https://www.aitkenre.com.au/8063374>



Diego Benitez
 02 4733 6999



Whilst every attempt has been made to ensure the accuracy of the floorplan contained here, measurements of doors, windows, rooms and any other items are approximate and no responsibility is taken for any error, omission or mis-statement. This plan is for illustrative purposes only and should be used as such by any prospective purchaser. The services, systems and appliances shown have not been tested and no guarantee as to their operability or efficiency can be given.
 Made with Metropex ©2020