






12 William Howell Drive Glenmore Park NSW

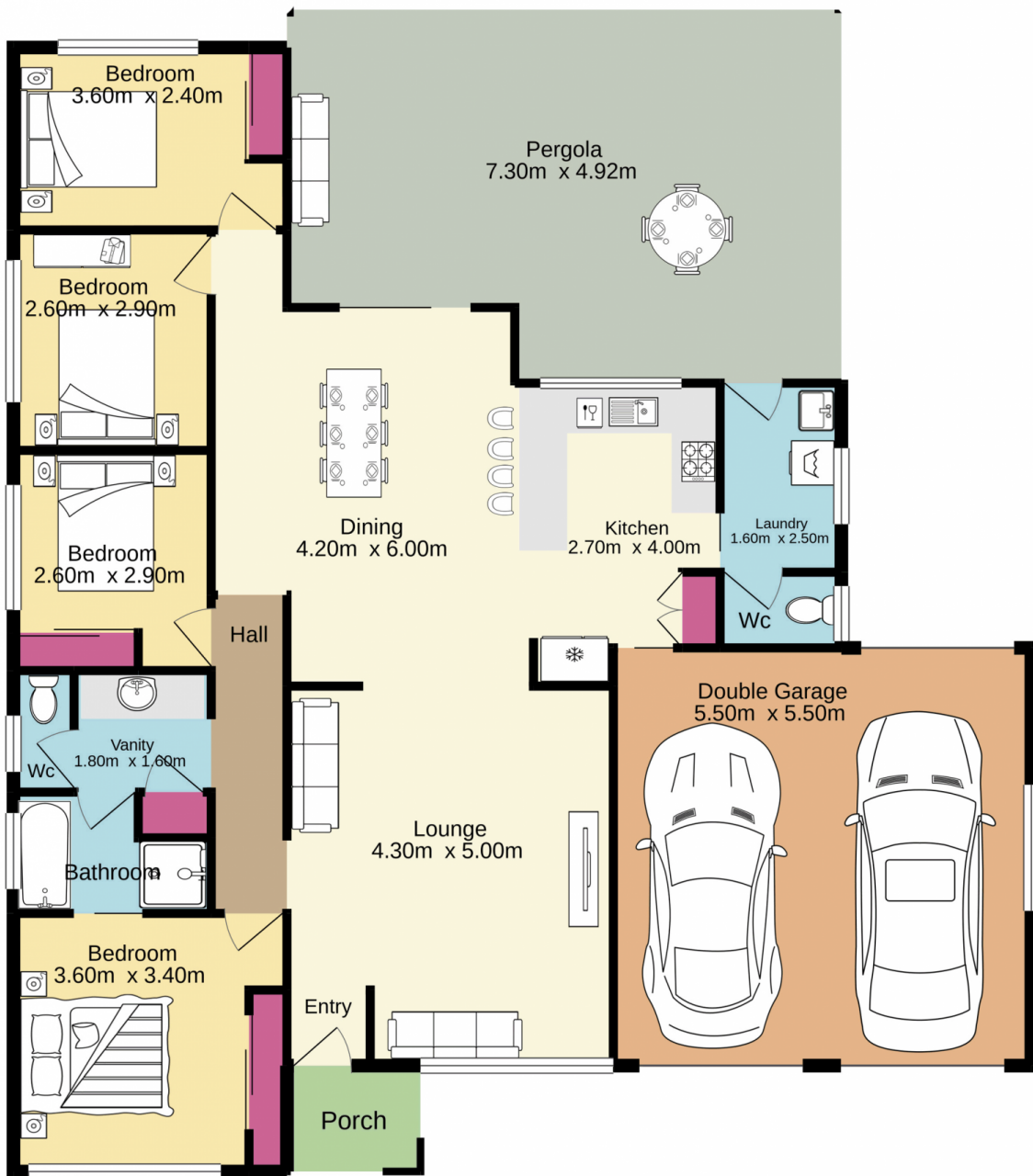
4  1  4 

Quality homes such as these are rarely found yet highly sought-after. Located in a convenient location in the Glenmore Park Public School catchment area and minutes to all the amenities you could need, this single level light filled family home is one not to be missed.

- + Light filled open plan lounge & dining rooms
- + Four well appointed bedrooms with ceiling fans & built in robes
- + Functional kitchen with ample storage & gas cooking
- + Floating floor boards, downlights, solar panels
- + Internal laundry with 2nd toilet
- + Double lock up garage with internal access
- + Huge undercover entertaining area with spacious useable back yard

Type : House
Price : \$ 890,000
Building Size : 130 sqm
Land Size : 512 sqm
View : <https://www.aitkenre.com.au/8063369>

[For full version visit the website](https://www.aitkenre.com.au)



Jim Aitken
+ Partners



Whilst every attempt has been made to ensure the accuracy of the floorplan contained here, measurements of doors, windows, rooms and any other items are approximate and no responsibility is taken for any error, omission or mis-statement. This plan is for illustrative purposes only and should be used as such by any prospective purchaser. The services, systems and appliances shown have not been tested and no guarantee as to their operability or efficiency can be given.
Made with Metropix ©2021