






34 Buyu Road Glenmore Park NSW

4  2  2 

This fantastic family home combines comfortable living and a floor plan to suit younger or mature families or even investors. Enjoying all the ease of single level living, the home features four generously sized bedrooms with the master boasting an ensuite and a walk in robe. You will love the large covered outdoor entertaining area and the single drive through garage and side access.

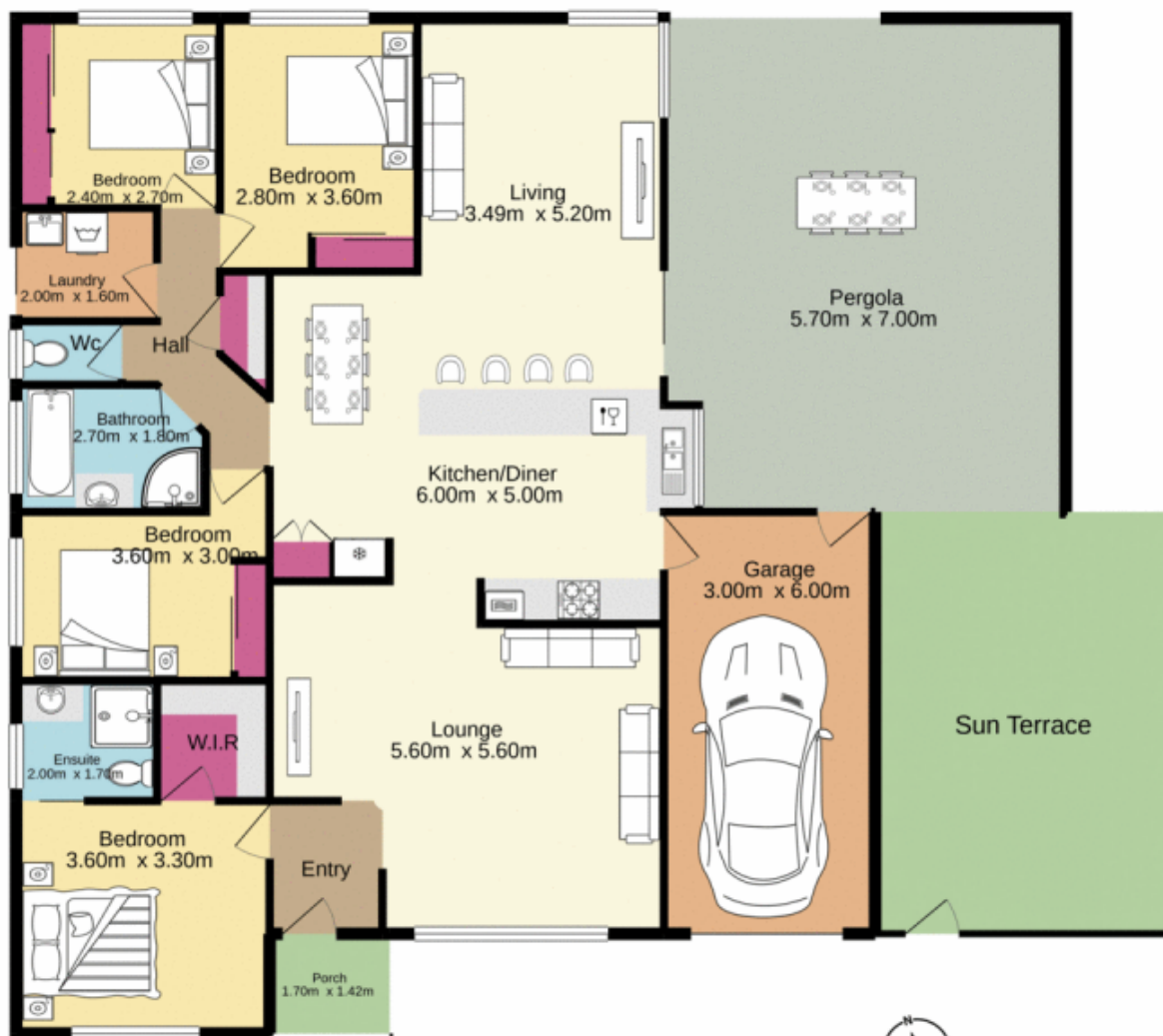
- + Glorious, renovated cooking quarters
- + Multiple living spaces
- + Enhanced ensuite
- + Built in wardrobes
- + Split system air conditioning
- + Expansive alfresco zone
- + Side access | child & pet friendly backyard

Type : House
Price : \$ 730,000
Land Size : 512 sqm
View : <https://www.aitkenre.com.au/8063362>



Diego Benitez
02 4733 6999

[For full version visit the website](https://www.aitkenre.com.au)



Jim Aitken
Partners

Whilst every attempt has been made to ensure the accuracy of the floorplan contained here, measurements of doors, windows, rooms and any other items are approximate and no responsibility is taken for any error, omission or mis-statement. This plan is for illustrative purposes only and should be used as such by any prospective purchaser. The services, systems and appliances shown have not been tested and no guarantee as to their operability or efficiency can be given.
Made with Metropix ©2020