



23 Willmington Loop Oran Park NSW

5  2  4 

A touch of class

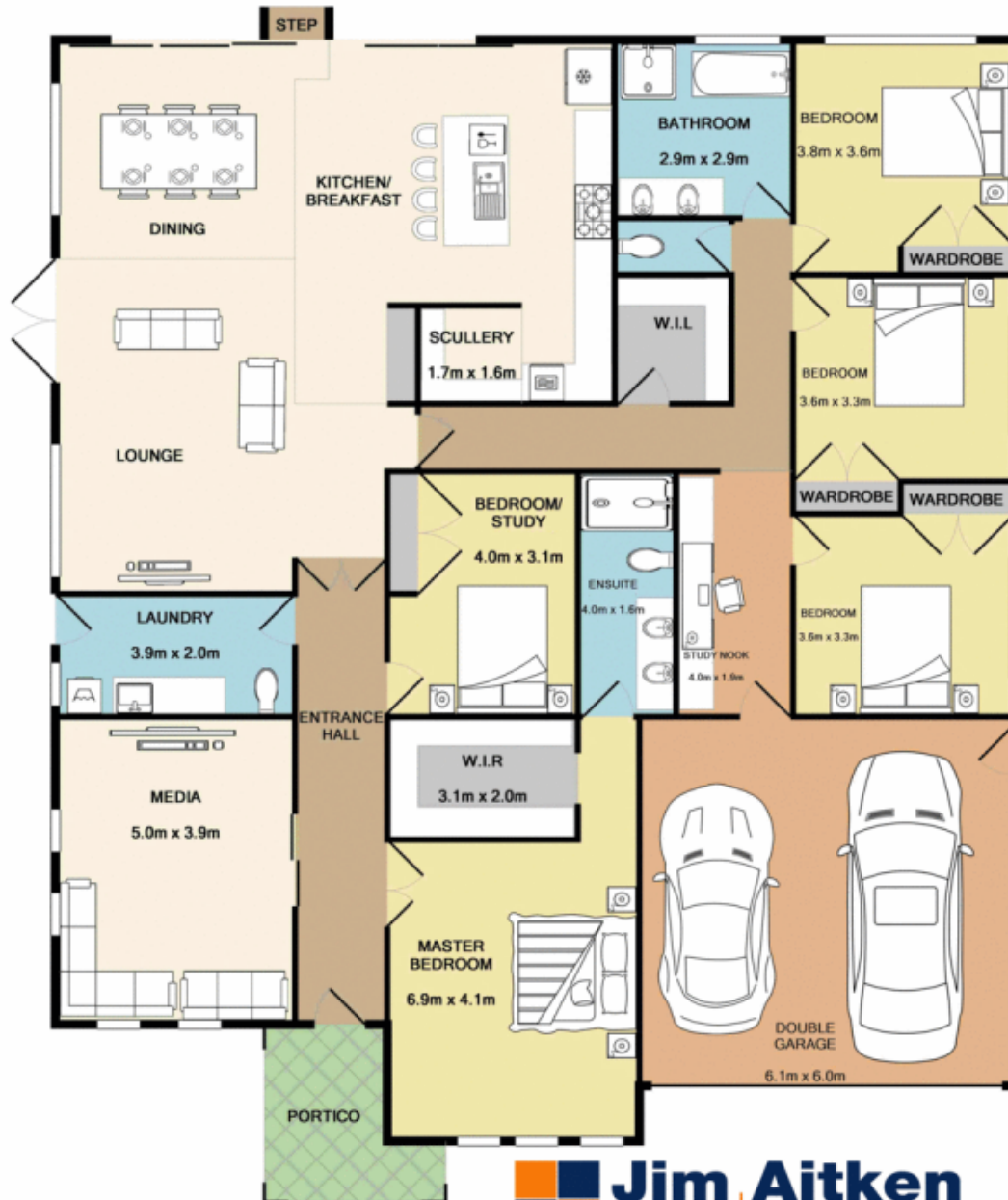
This exceptional residence is breathtaking from your first impression and provides unrivalled luxury with an abundance of natural light. Offering sophistication and style, this modern executive home has been expertly crafted with an expansive open plan and family friendly layout. Five generous sized bedrooms complete with built in robes, the expansive master bedroom features a large walk in robe and immaculately kept modern en-suite with frameless shower. The luxurious designer kitchen offers 50mm waterfall Island Bench with breakfast bar for day to day dining, stainless steel appliances, induction cooktop and 900mm gas oven with range hood, plumbing point for fridge and a large walk in pantry. The stacker doors open out into a low maintenance yard complete with Wallmark

Type : House
Land Size : 661 sqm
View : <https://www.aitkenre.com.au/8063313>



Diego Benitez
 02 4733 6999

[For full version visit the website](https://www.aitkenre.com.au)



Whilst every attempt has been made to ensure the accuracy of the floor plan contained here, measurements of doors, windows, rooms and any other items are approximate and no responsibility is taken for any error, omission, or mis-statement. This plan is for illustrative purposes only and should be used as such by any prospective purchaser. The services, systems and appliances shown have not been tested and no guarantee as to their operability or efficiency can be given.
Made with Metropix ©2019