



**13 Berril Place Glenmore Park NSW**

4  2  4 

From the moment you walk through the door you can notice the extremely high quality of this exceptionally stunning family home! Ideally located in a quiet cul-de-sac street in the ever-growing popular suburb of Glenmore Park.

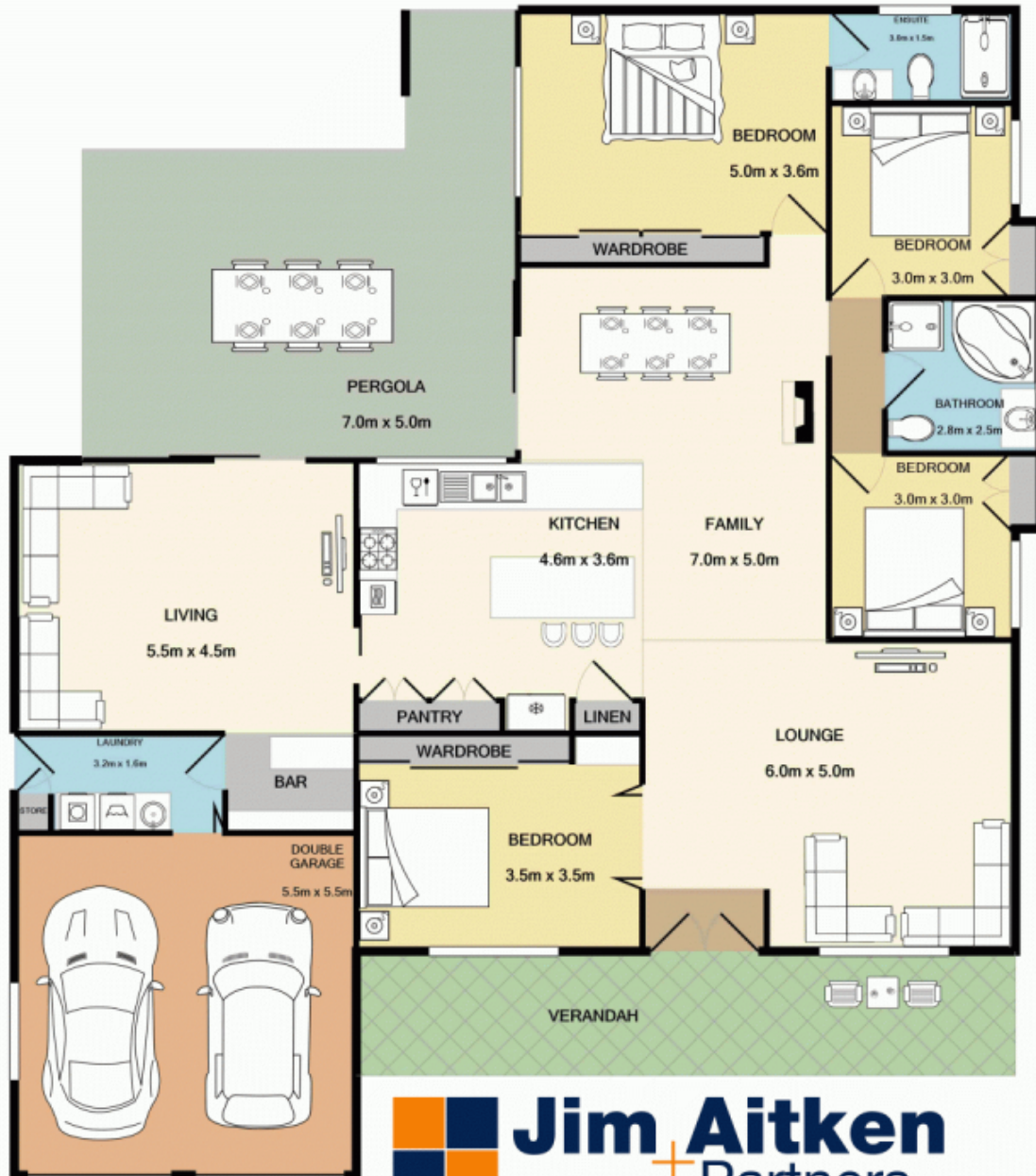
Beautifully designed and intuitively crafted for lifestyle and convenience, this exceptional home provides the best of family living and entertainment possibilities. Orientated to maximise entertainment opportunities with a large open plan design from the kitchen all the way through to the rear of the home which has a beautiful covered pergola overlooking the inground pool, the house offers open-plan living with a dining area which combines seamlessly with a superb chefs kitchen appropriate for all your entertaining desires.

**Type** : House  
**Price** : \$ 852,000  
**Building Size** : 180 sqm  
**Land Size** : 627 sqm  
**View** : <https://www.aitkenre.com.au/8063292>



**Diego Benitez**  
**02 4733 6999**

[For full version visit the website](https://www.aitkenre.com.au)



Whilst every attempt has been made to ensure the accuracy of the floor plan contained here, measurements of doors, windows, rooms and any other items are approximate and no responsibility is taken for any error, omission, or mis-statement. This plan is for illustrative purposes only and should be used as such by any prospective purchaser. The services, systems and appliances shown have not been tested and no guarantee as to their operability or efficiency can be given  
Made with Metropix ©2019