



4 Bulu Drive Glenmore Park NSW

4  2  4 

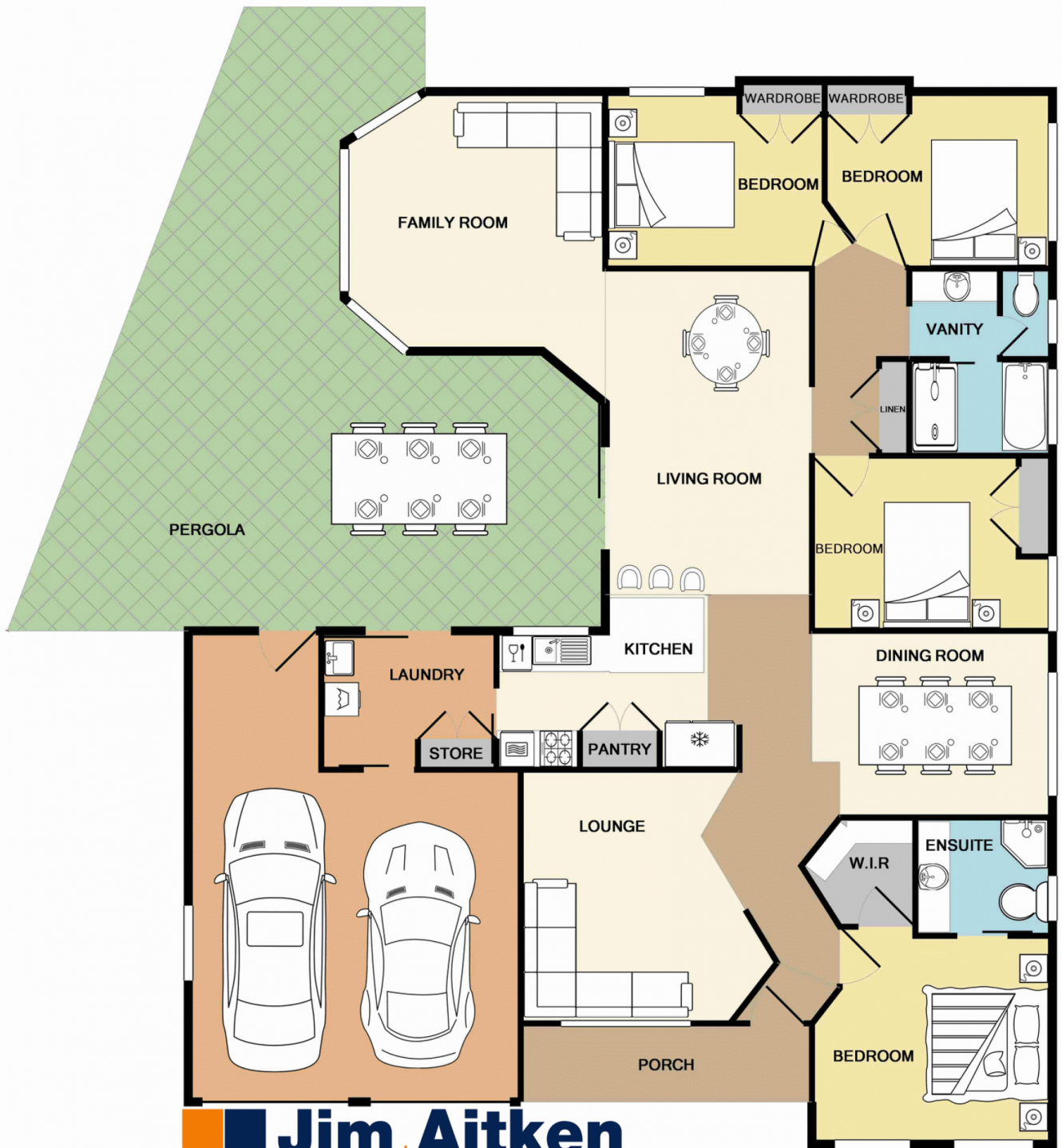
Not often in Glenmore Park will you find a big, spacious single level four bedroom home on such a large block. Nestled on approximately 718sqm of land in close proximity to shops, schools & parks, this great home ticks many boxes that other homes just cant. With a newly renovated kitchen boasting modern stainless steel appliances; large master bedroom with ensuite and walk-in robe; built-ins to other bedrooms; multiple formal and informal living areas plus an impressive undercover entertaining area there is plenty of space for the whole family. Other great features include solar panels, electric remote control window shutters, a large workshop in the double garage with remote plus a large shed and side access with driveway for extra cars, boats or trailers. With too many features to list an inspection is a must. Call today!

Type : House
Land Size : 718 sqm
View : <https://www.aitkenre.com.au/8063249>



Diego Benitez
02 4733 6999

[For full version visit the website](https://www.aitkenre.com.au)



Jim Aitken
+ Partners

Whilst every attempt has been made to ensure the accuracy of the floor plan contained here, measurements of doors, windows, rooms and any other items are approximate and no responsibility is taken for any error, omission, or mis-statement. This plan is for illustrative purposes only and should be used as such by any prospective purchaser. The services, systems and appliances shown have not been tested and no guarantee as to their operability or efficiency can be given
Made with Metropix ©2017