



95 Newham Drive Cambridge Gardens NSW

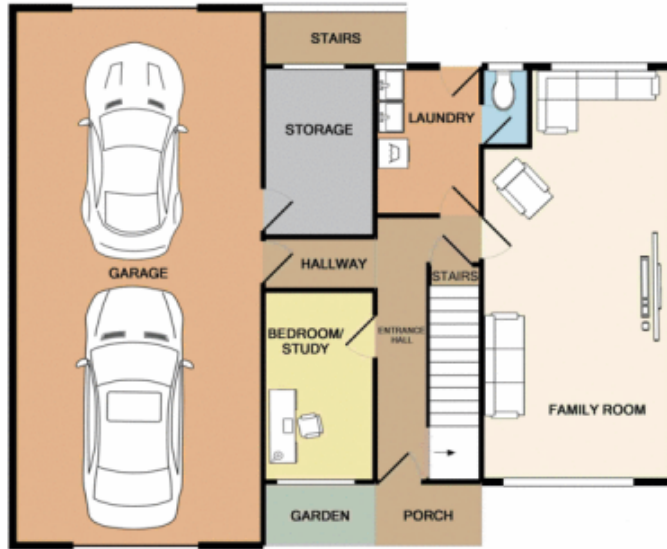
3  1  4 

Perfectly positioned close to schools, shops and transport in the ever popular suburb of Cambridge Gardens and resting on a 650sqm block of land, this two storey home delights with its convenient location and offers an astute homeowner or savvy investor plenty of scope to add their own personal touches. The original interiors feature a flexible floor plan comprising of a very spacious lounge/dining room, three good sized bedrooms with built-ins to all, an ample sized kitchen with an informal dining area, and a second living area. The home further boasts ample car accommodation in the form of a tandem lock up garage with storage/workshop space.

Type : House
Land Size : 650 sqm
View : <https://www.aitkenre.com.au/8063241>

- * Versatile floor plan
- * Great location

[For full version visit the website](https://www.aitkenre.com.au)

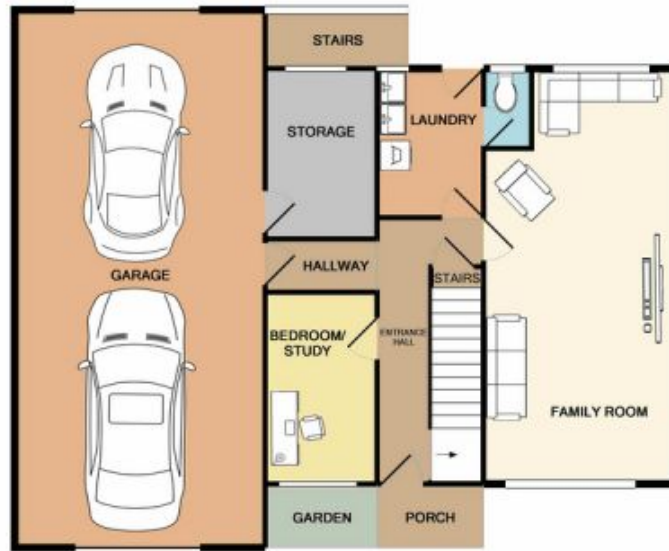


GROUND FLOOR



Jim Aitken
Partners 1ST FLOOR

Whilst every attempt has been made to ensure the accuracy of the floor plan contained here, measurements of doors, windows, rooms and any other items are approximate and no responsibility is taken for any error, omission, or mis-statement. This plan is for illustrative purposes only and should be used as such by any prospective purchaser. The services, systems and appliances shown have not been tested and no guarantee as to their operability or efficiency can be given.
Made with Metropix 02018



GROUND FLOOR



Jim Aitken
Partners 1ST FLOOR

Whilst every attempt has been made to ensure the accuracy of the floor plan contained here, measurements of doors, windows, rooms and any other items are approximate and no responsibility is taken for any error, omission, or mis-statement. This plan is for illustrative purposes only and should be used as such by any prospective purchaser. The services, systems and appliances shown have not been tested and no guarantee as to their operability or efficiency can be given.
Made with Metropix 02018