






13 Gemalong Place Glenmore Park NSW

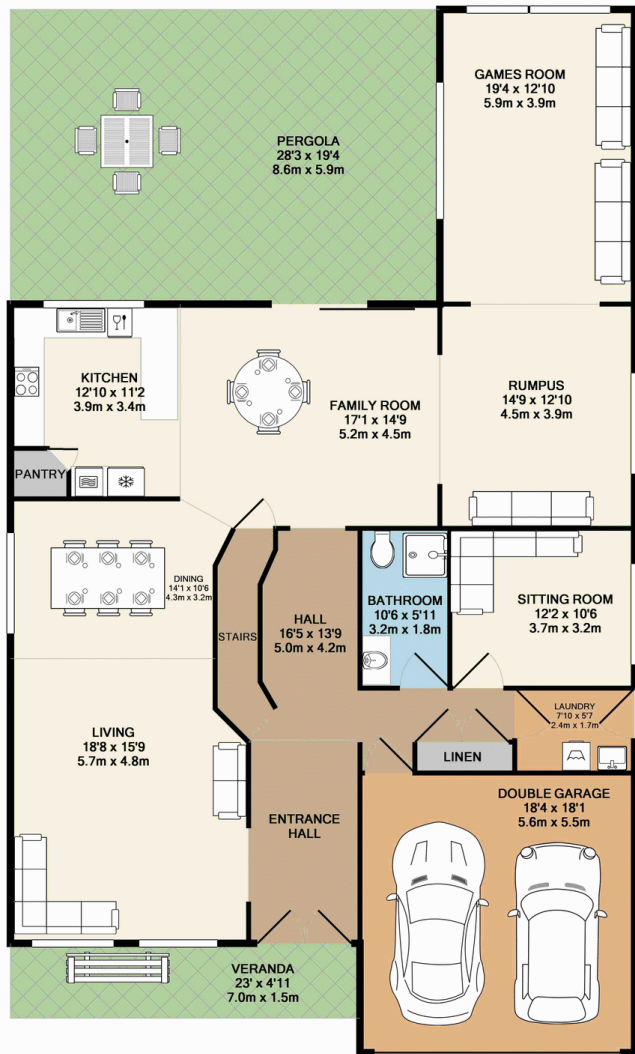
5  3  2 

A long sweeping driveway leads you to this beautifully built home which offers ample space for a larger family. Offering four living areas, five bedrooms, a welcoming kitchen/dining area, three bathrooms and an upstairs study. Why not sit back and enjoy the peaceful living while entertaining your family and friends in the undercover entertaining area overlooking the gorgeous sun lit garden. This luxurious home with plenty of extras included is certainly not one to be missed.

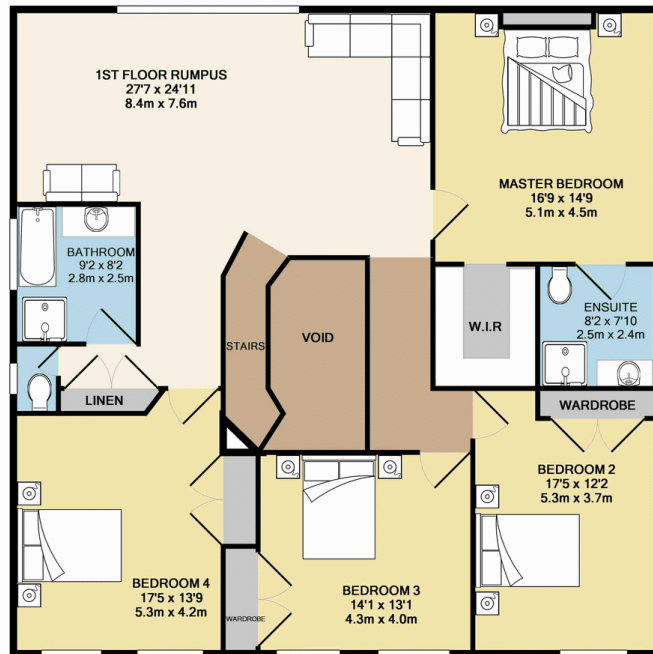
Type : House
Land Size : 882 sqm
View : <https://www.aitkenre.com.au/8063099>

Five double sized bedrooms
 Three bathrooms
 Multiple oversized living areas
 Ducted air conditioning
 Jacuzzi

[For full version visit the website](https://www.aitkenre.com.au)



GROUND FLOOR



1ST FLOOR



Whilst every attempt has been made to ensure the accuracy of the floor plan contained here, measurements of doors, windows, rooms and any other items are approximate and no responsibility is taken for any error, omission, or mis-statement. This plan is for illustrative purposes only and should be used as such by any prospective purchaser. The services, systems and appliances shown have not been tested and no guarantee as to their operability or efficiency can be given.
Made with Metropix ©2016