



40 Pembroke Street Cambridge Park NSW

5 🏠 2 🛏

If you have been searching for a set and forget investment, this property is not to be missed. Located in the ever popular suburb of Cambridge Park and situated just a stones throw from sporting fields, local shops and schools, this house and granny flat combo is sure to be popular.

Type : House
Price : \$ 880,000
Land Size : 601 sqm
View : <https://www.aitkenre.com.au/8062345>

Approximate distances to local amenities:

- + Closest bus stop 10m
- + Cambridge Park shops 300m
- + Allsop Oval 300m
- + Cambridge Park public school 700m
- + Cambridge Park high school 1.5km

DISCLAIMER: Whilst we deem this information to be

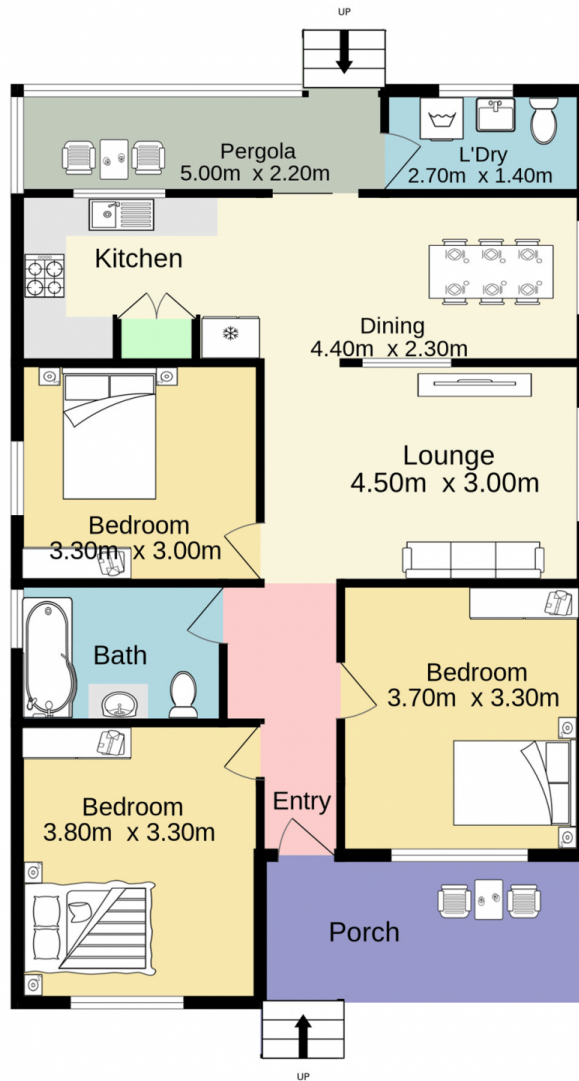
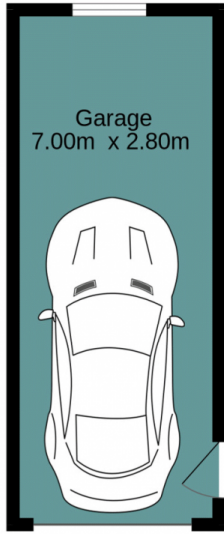
[For full version visit the website](https://www.aitkenre.com.au)



Robert Rolls
02 4732 5055

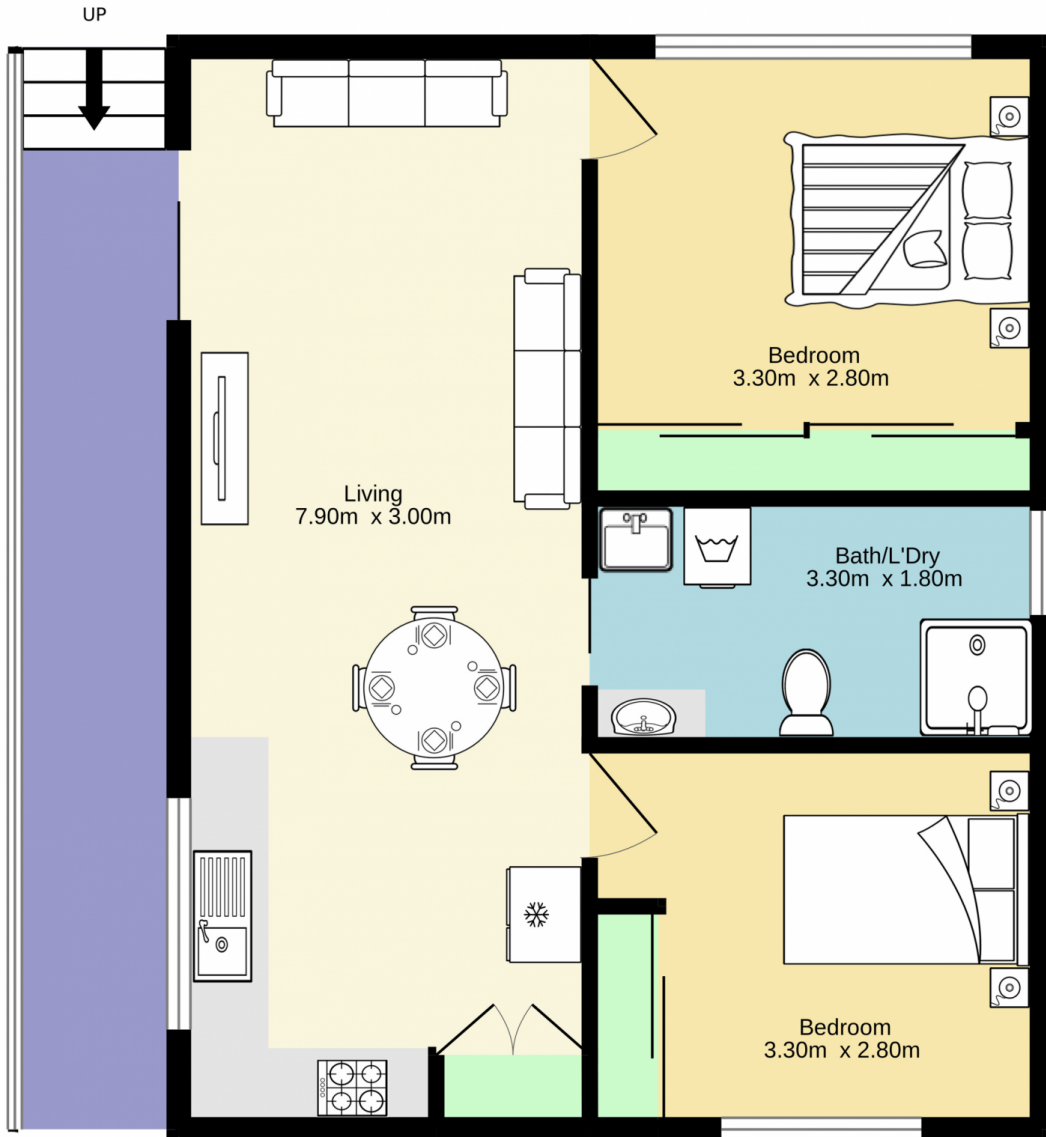


Kenrick Muir
02 4732 5055



TOTAL FLOOR AREA : 107.1 sq.m. approx.

Whilst every attempt has been made to ensure the accuracy of the floorplan contained here, measurements of doors, windows, rooms and any other items are approximate and no responsibility is taken for any error, omission or mis-statement. This plan is for illustrative purposes only and should be used as such by any prospective purchaser. The services, systems and appliances shown have not been tested and no guarantee as to their operability or efficiency can be given.
Made with Metropix ©2024



TOTAL FLOOR AREA : 49.7 sq.m. approx.

Whilst every attempt has been made to ensure the accuracy of the floorplan contained here, measurements of doors, windows, rooms and any other items are approximate and no responsibility is taken for any error, omission or mis-statement. This plan is for illustrative purposes only and should be used as such by any prospective purchaser. The services, systems and appliances shown have not been tested and no guarantee as to their operability or efficiency can be given.
Made with Metropix ©2024