






### 10a Braemar Drive South Penrith NSW

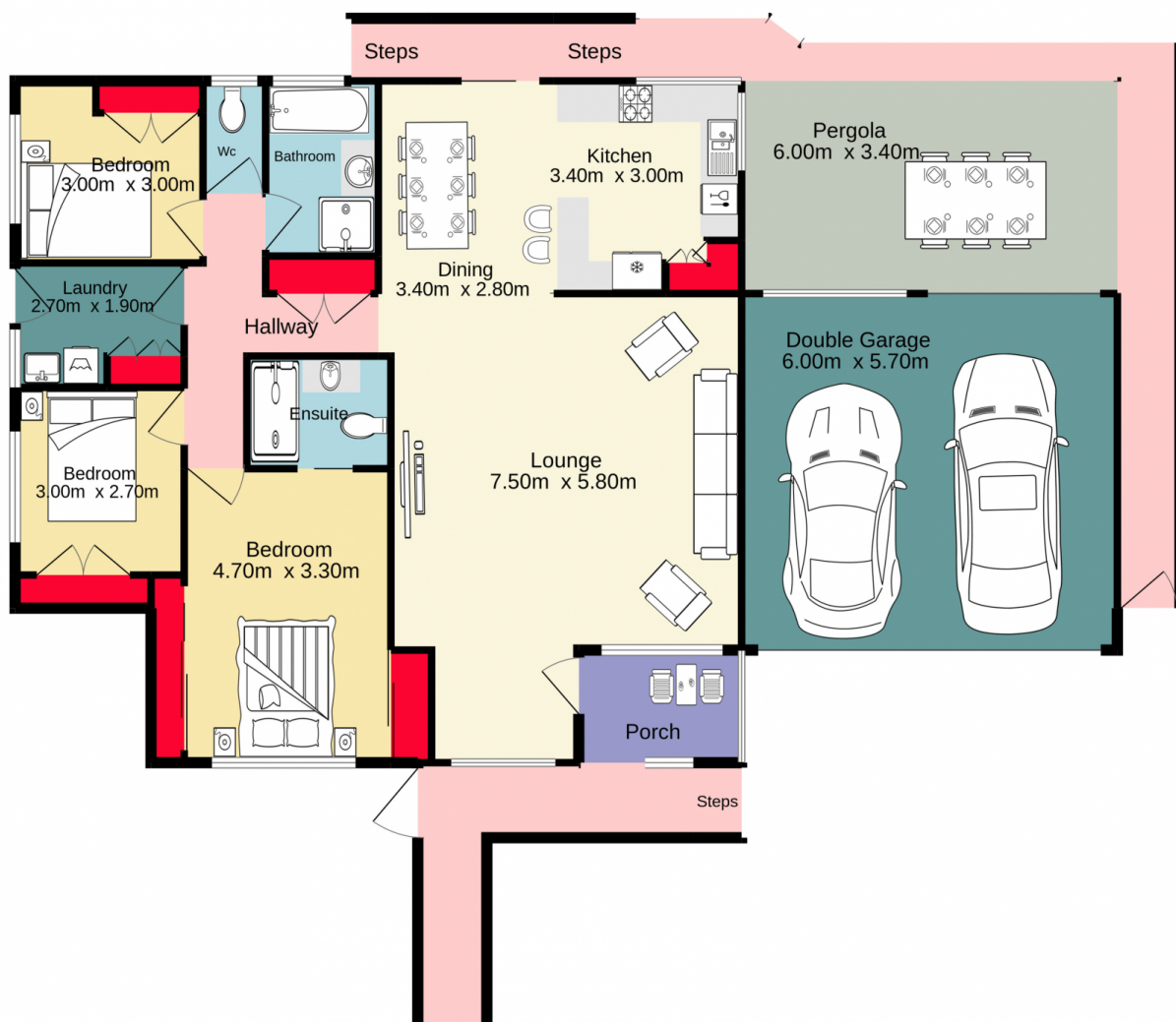
3  2  4 

First Home? Retiring? Upsizing? This South Penrith home ticks all those boxes and is move in ready. This well finished house is far younger than what you'd expect for the area and features all the inclusions buyers and tenants are chasing. A modern kitchen with stainless appliances, ducted air conditioning, main bathroom with spa bath plus an ensuite to the main bedroom, easy care yard, undercover entertaining area and a double garage with drive through. With this you could have the perfect home for you and your family plus a solid investment in your future.

- + Strata title (but no strata fees)
- + Three bedrooms (all with built ins)
- + Master bedroom with dual wardrobes and ensuite

**Type** : House  
**Price** : \$ 810,100  
**Land Size** : 502 sqm  
**View** : <https://www.aitkenre.com.au/8062327>

[For full version visit the website](https://www.aitkenre.com.au/8062327)



**Jim Aitken**  
Partners



Whilst every attempt has been made to ensure the accuracy of the floorplan contained here, measurements of doors, windows, rooms and any other items are approximate and no responsibility is taken for any error, omission or mis-statement. This plan is for illustrative purposes only and should be used as such by any prospective purchaser. The services, systems and appliances shown have not been tested and no guarantee as to their operability or efficiency can be given.  
Made with Metropix ©2022