

6 Epping Close Cambridge Park NSW

4  1  2 

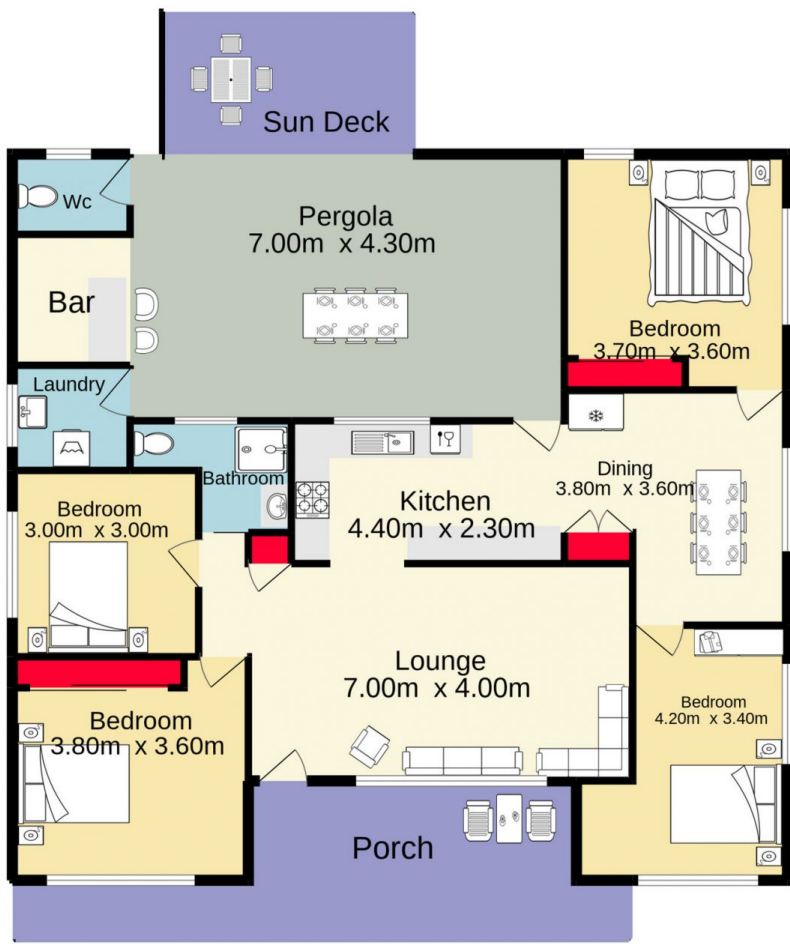
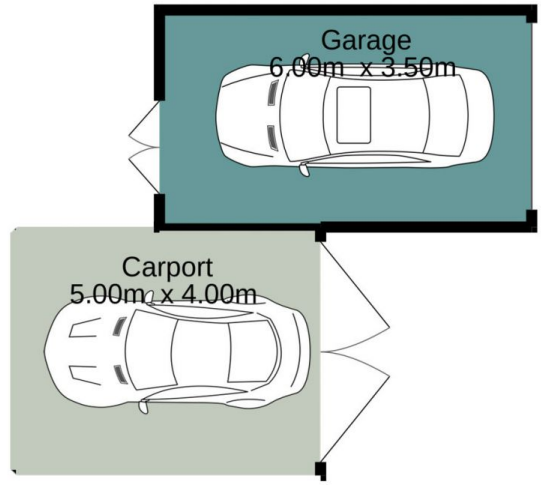
Tucked away in a quiet pocket of Cambridge Park this four bedroom, brick veneer residence is screaming out to all first home buyers and astute investors looking at capitalising on a great opportunity.

- + Four spacious bedrooms
- + Split system air conditioning throughout
- + Large undercover entertainment area
- + New flooring laid in 3/4 bedrooms
- + Expected rental return \$500pw plus
- + Granny Flat potential (STCA)
- + Fantastic location

Within walking distance of both Cambridge Park public and high school and within minutes drive of Penrith CBD, this

[For full version visit the website](https://www.aitkenre.com.au/8062312)

Type : House
Price : \$ 820,000
Land Size : 613 sqm
View : <https://www.aitkenre.com.au/8062312>



Jim Aitken
+
Partners



TOTAL FLOOR AREA : 178.8 sq.m. approx.

Whilst every attempt has been made to ensure the accuracy of the floorplan contained here, measurements of doors, windows, rooms and any other items are approximate and no responsibility is taken for any error, omission or mis-statement. This plan is for illustrative purposes only and should be used as such by any prospective purchaser. The services, systems and appliances shown have not been tested and no guarantee as to their operability or efficiency can be given.
Made with Metropix ©2022