






7/400 Glenmore Parkway Glenmore Park NSW

3  **2**  **4** 

Less than ten years young and offering far more than most other townhouses in the region. This property has size more like a stand alone house and will suit those after space and quality. With tiled open plan living and dining spaces, stone benchtops and stainless appliances to the large kitchen. Plus a second living room upstairs and ducted air conditioning throughout, this is sure to suit you, and your needs.

Type : Townhouse

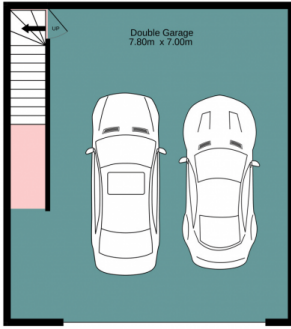
Price : \$ 706,000

View : <https://www.aitkenre.com.au/8062304>

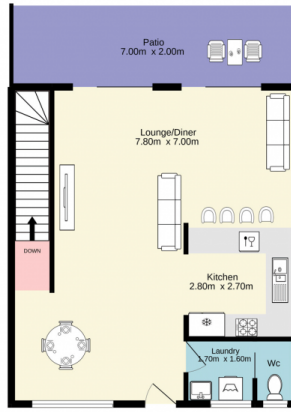
- + Open plan living and dining with access to courtyard and private lawn
- + Three large bedrooms, master with WIR and ensuite
- + Large family bathroom with bath plus third toilet downstairs
- + Upstairs second living room leading to the east facing

[For full version visit the website](https://www.aitkenre.com.au)

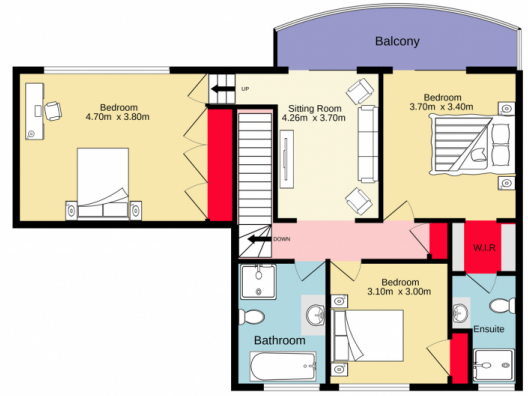
Basement floor
54.6 sq.m. approx.



Ground floor
54.6 sq.m. approx.



1st floor
75.0 sq.m. approx.



TOTAL FLOOR AREA: 184.1 sq.m. approx.

Whilst every attempt has been made to ensure the accuracy of the floorplan contained here, measurements of doors, windows, rooms and any other items are approximate and no responsibility is taken for any error, omission or mis-statement. This plan is for illustrative purposes only and should be used as such by any prospective purchaser. The services, systems and appliances shown have not been tested and no guarantee as to their operability or efficiency can be given.

Made with Metropix ©2022

