

24 Scenic Crescent Mount Riverview NSW

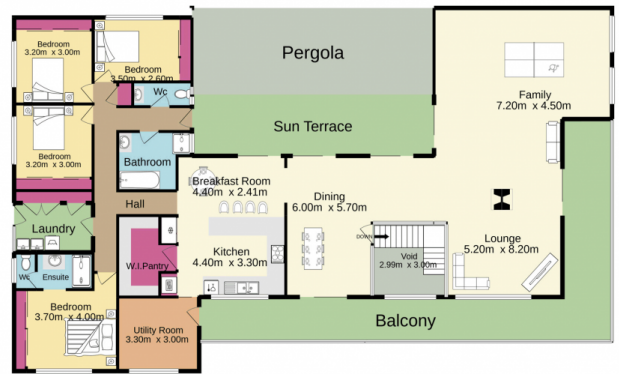
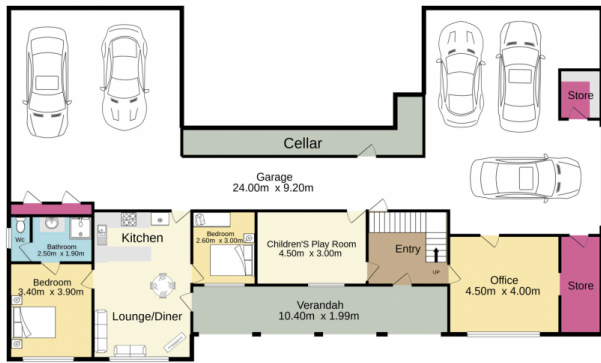
6  3  12 

Nestled in a private oasis with sweeping bush views lies this large custom designed family home. Featuring full brick construction with a suspended concrete slab, no expense has been spared in its creation. The upper level features a large living room with a central fire place, a second living room, four bedrooms, a sewing room and a large kitchen with a walk in pantry. The lower level features a massive garage with space for five or more cars, a large home office, 2 bedroom in law accommodation and a games room. The rear yard is perfect for families and includes a sparkling in ground swimming pool and undercover entertaining area.

- + Large floor plan
- + Massive garage

[For full version visit the website](https://www.aitkenre.com.au/8062271)

Type	: House
Price	: \$ 1,265,000
Building Size	: 125 sqm
Land Size	: 1669 sqm
View	: https://www.aitkenre.com.au/8062271



TOTAL FLOOR AREA : 534.9 sq.m. approx.

Whilst every attempt has been made to ensure the accuracy of the floorplan contained here, measurements of doors, windows, rooms and any other items are approximate and no responsibility is taken for any error, omission or mis-statement. This plan is for illustrative purposes only and should be used as such by any prospective purchaser. The services, systems and appliances shown have not been tested and no guarantee as to their operability or efficiency can be given.
Made with Metropix ©2021

