



16/181 Derby Street Penrith NSW

2  1  2 

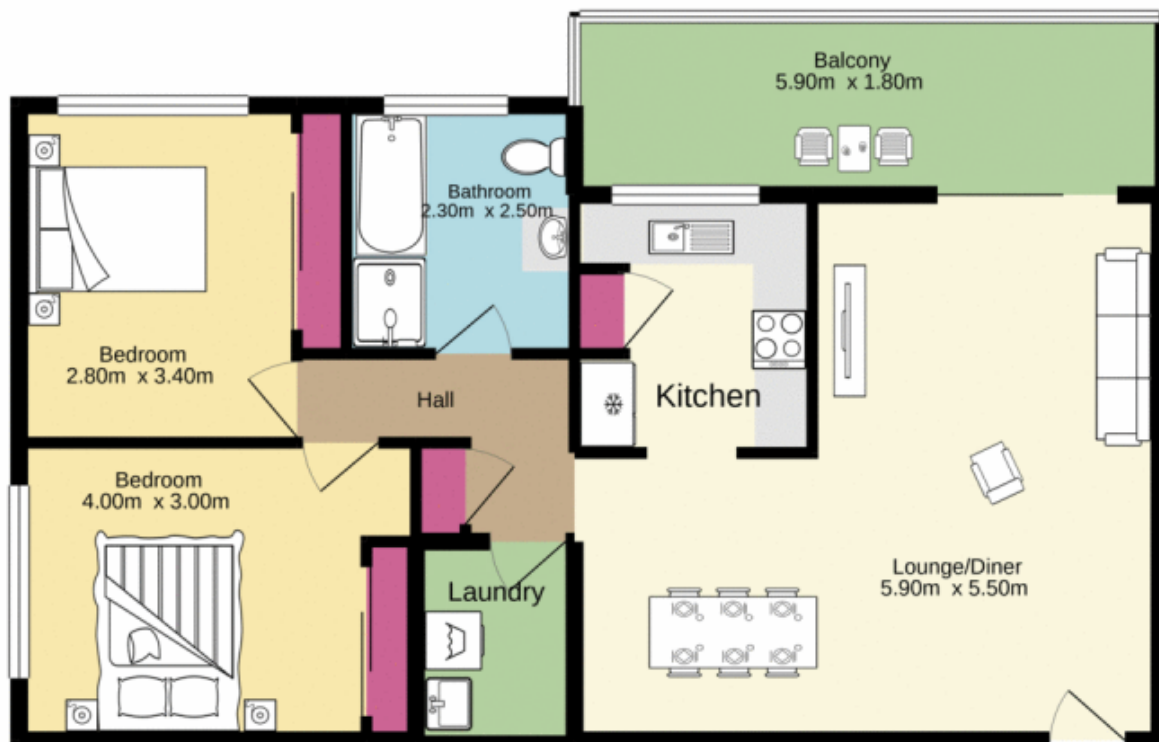
Situated in a pleasant complex in Penrith's CBD this first floor unit enjoys a position that is away from the main entrance and the street which will leave you feeling like you're away from the hustle and bustle all whilst being able to take advantage of the many local amenities that Penrith has to offer which are only a short distance away. If you're a first home buyer or you're looking to add to your investment portfolio this unit is a must see! Call us now to arrange your own private inspection.

Type : Unit

View : <https://www.aitkenre.com.au/8062262>

- + Lock up garage
- + Leafy outlook
- + Internal laundry
- + Open plan layout
- + Freshly painted throughout

[For full version visit the website](https://www.aitkenre.com.au)



Whilst every attempt has been made to ensure the accuracy of the floorplan contained here, measurements of doors, windows, rooms and any other items are approximate and no responsibility is taken for any error, omission or mis-statement. This plan is for illustrative purposes only and should be used as such by any prospective purchaser. The services, systems and appliances shown have not been tested and no guarantee as to their operability or efficiency can be given.
Made with Metrogix ©2021