



13 Gemalong Place Glenmore Park NSW

5  3  2 

Nestled in a quiet pocket of the sought-after Blue Hills Estate is this expansive family home. Downstairs you will find ample room for all the family with multiple living and dining areas. Also located on the ground floor is the fifth bedroom - perfect for guest accommodation with a bathroom adjacent. Outside is a large undercover entertaining area, landscaped grassed yard and even side access for the boat or caravan.

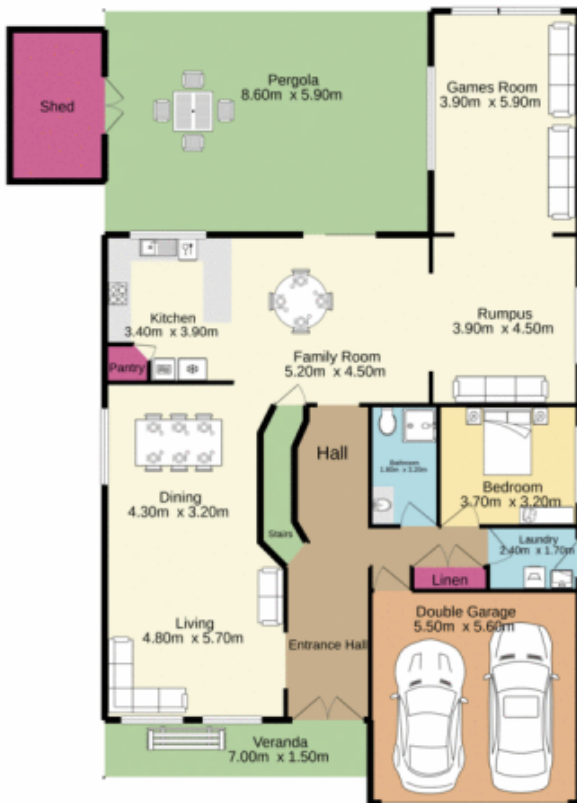
Upstairs you will find yet another living room, family bathroom, large double bedrooms with built ins and a massive master suite with ensuite and walk in robe. With all the must haves for a large family including ducted air con, garden shed and a truly expansive floorplan this home is sure to tick all the boxes.

Type	: House
Price	: \$ 1,040,000
Building Size	: 373 sqm
Land Size	: 882 sqm
View	: https://www.aitkenre.com.au/8062241

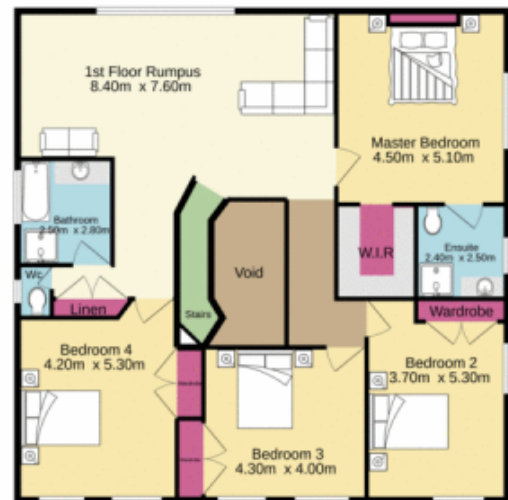
[For full version visit the website](https://www.aitkenre.com.au)

<https://www.aitkenre.com.au>

Ground floor
201.2 sq.m. approx.



1st floor
162.4 sq.m. approx.



TOTAL FLOOR AREA: 363.6 sq.m. approx.

Whilst every attempt has been made to ensure the accuracy of the floorplan contained here, measurements of doors, windows, rooms and any other items are approximate and no responsibility is taken for any error, omission or mis-statement. This plan is for illustrative purposes only and should be used as such by any prospective purchaser. The services, systems and appliances shown have not been tested and no guarantee as to their operability or efficiency can be given.
Made with Metropix ©2020

