



## 12 Clissold Street Cambridge Park NSW

4 1 2

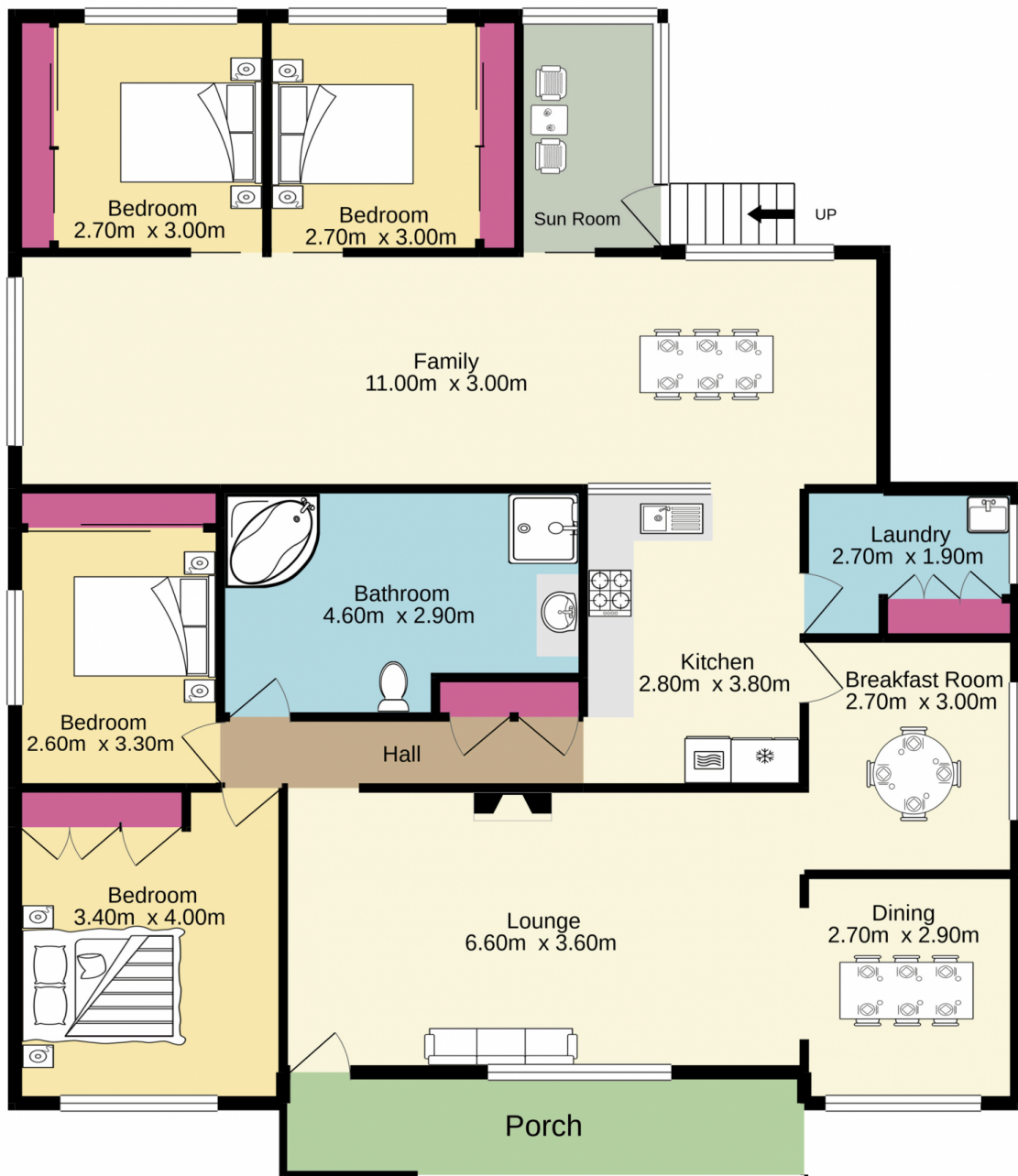
With complementary features in Cambridge Park, this four bedroom brick veneer home is sure to turn some heads. Presenting two spacious living areas, a renovated kitchen and bathroom that will not disappoint, this property will definitely tick some boxes.

- + Ducted air conditioning
- + Four bedrooms each with ceiling fans and built-in wardrobes
- + Fire Place in main living space
- + Lock up garage
- + 450m from Cambridge Park Public School
- + 1.3km from Cambridge Park High School

Within close proximity to Schools, Sporting Grounds,

[For full version visit the website](https://www.aitkenre.com.au/8062216)

**Type** : House  
**Price** : \$ 770,000  
**Land Size** : 601 sqm  
**View** : <https://www.aitkenre.com.au/8062216>



**Jim Aitken**  
Partners



TOTAL FLOOR AREA : 153.3 sq.m. approx.

Whilst every attempt has been made to ensure the accuracy of the floorplan contained here, measurements of doors, windows, rooms and any other items are approximate and no responsibility is taken for any error, omission or mis-statement. This plan is for illustrative purposes only and should be used as such by any prospective purchaser. The services, systems and appliances shown have not been tested and no guarantee as to their operability or efficiency can be given.  
Made with Metropix ©2021