






15 Mariposa Circuit Caddens NSW

4  2  4 

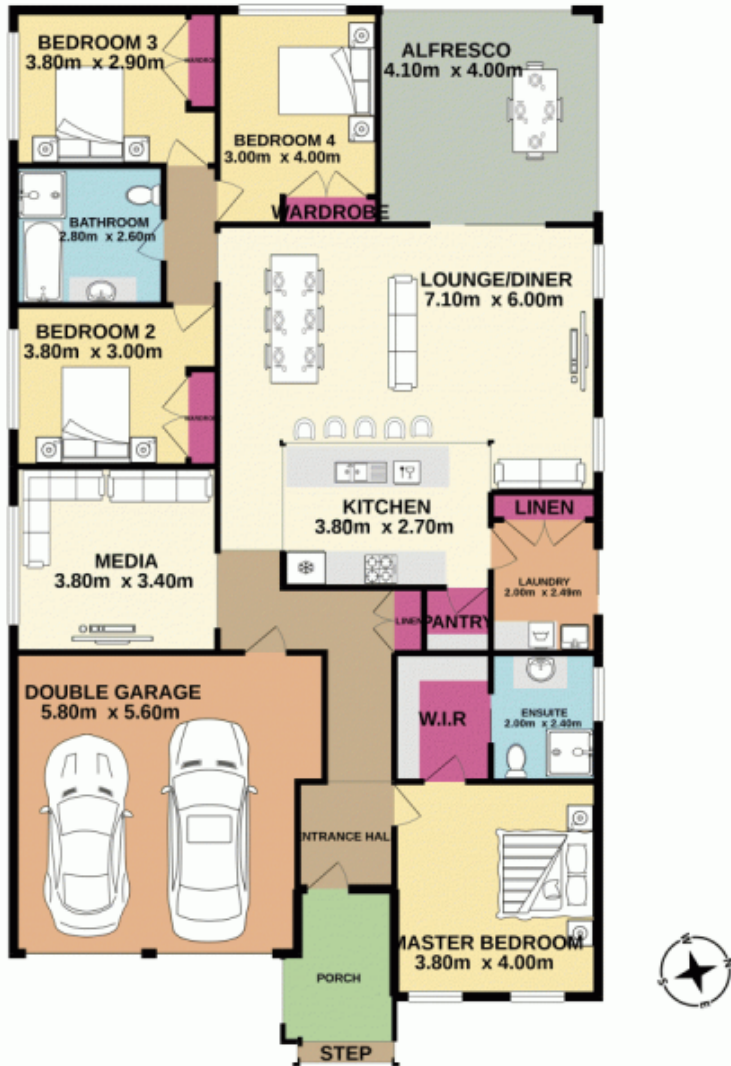
If you are looking for a quiet location, then this home is for you. With sweeping views across parklands and resting in the heart of Caddens Estate you will discover this 4 year old Beechwood home. The exceptional floor plan is designed with entertaining in mind. Your gourmet kitchen complete with stone benches, walk-in pantry and gas cooking opens to your large lounge and dining areas, which flow effortlessly to the alfresco area. Situated on a 456m² block you are granted with side access which is rare for this estate.

- + Main bedroom with walk in robe and ensuite
- + Ducted air conditioning through-out
- + Double garage with remote access
- + Second lounge area/media room

[For full version visit the website](https://www.aitkenre.com.au/8062205)

Type : House
Building Size : 168 sqm
Land Size : 456 sqm
View : <https://www.aitkenre.com.au/8062205>

GROUND FLOOR
193.2 sq. m. approx.



TOTAL FLOOR AREA: 193.2 sq. m. approx.

Whilst every attempt has been made to ensure the accuracy of the floorplan contained here, measurements of doors, windows, rooms and any other items are approximate and no responsibility is taken for any error, omission or mis-statement. This plan is for illustrative purposes only and should be used as such by any prospective purchaser. The services, systems and appliances shown have not been tested and no guarantee as to their operability or efficiency can be given.
Made with Metropix ©2020