



11 Wilson Way Blaxland NSW

3 2

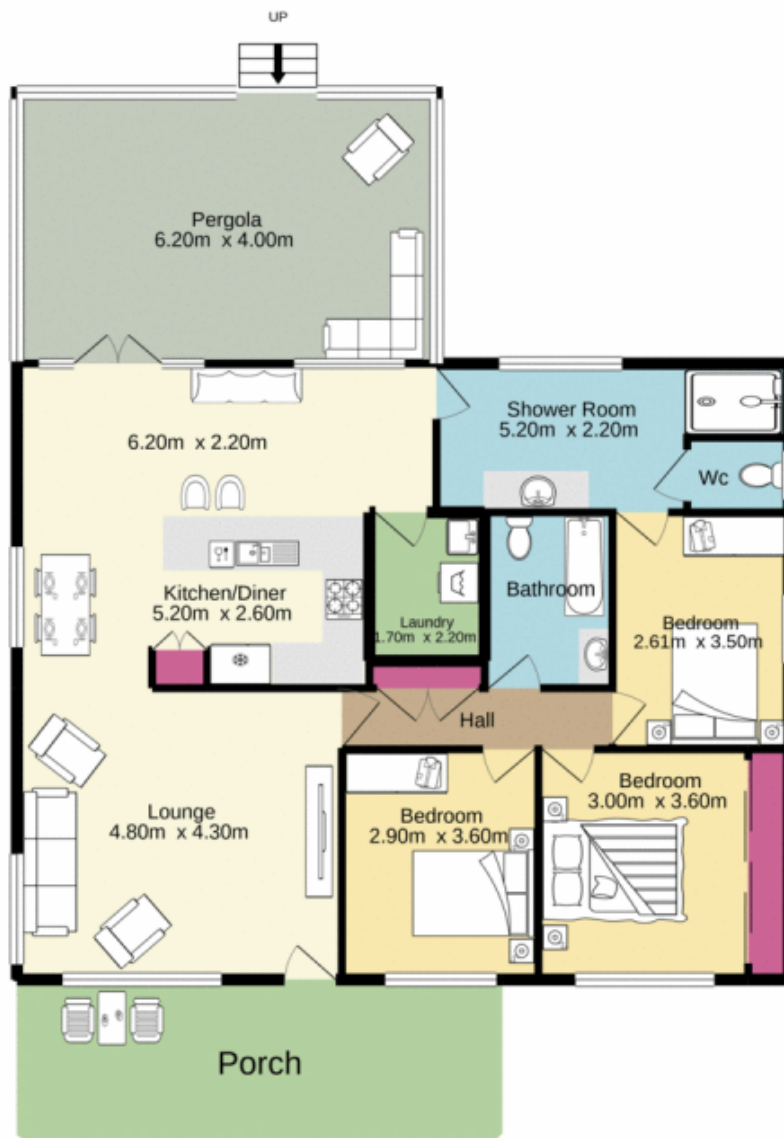
Don't miss your chance to secure this cute mountains cottage. Convenient location and on a sizeable block this will suit a variety of buyers whether for a first home or an investment.

- + Updated kitchen
- + Three bedrooms
- + Two bathrooms
- + Covered timber deck
- + Timber flooring
- + Large fenced backyard
- + 739m2 block (approx.)

Positioned within walking distance to Blaxland station, shops and Blaxland Primary School this is a perfect first

[For full version visit the website](https://www.aitkenre.com.au/8062185)

Type : House
Price : \$ 675,276
Land Size : 739 sqm
View : <https://www.aitkenre.com.au/8062185>



Whilst every attempt has been made to ensure the accuracy of the floorplan contained here, measurements of doors, windows, rooms and any other items are approximate and no responsibility is taken for any error, omission or mis-statement. This plan is for illustrative purposes only and should be used as such by any prospective purchaser. The services, systems and appliances shown have not been tested and no guarantee as to their operability or efficiency can be given.
Made with Metropix ©2020

