



## 10 Haining Street Cambridge Park NSW

4  2  4 

This spacious Neeta home is the perfect place to start your property journey if are you looking for a lovely family home in a great location! This family home boasts four bedrooms, large living areas and the benefit of a second bathroom. With a garage, rear deck with ample yard for the kids and pets to roam, this loved family home is one not to be missed.

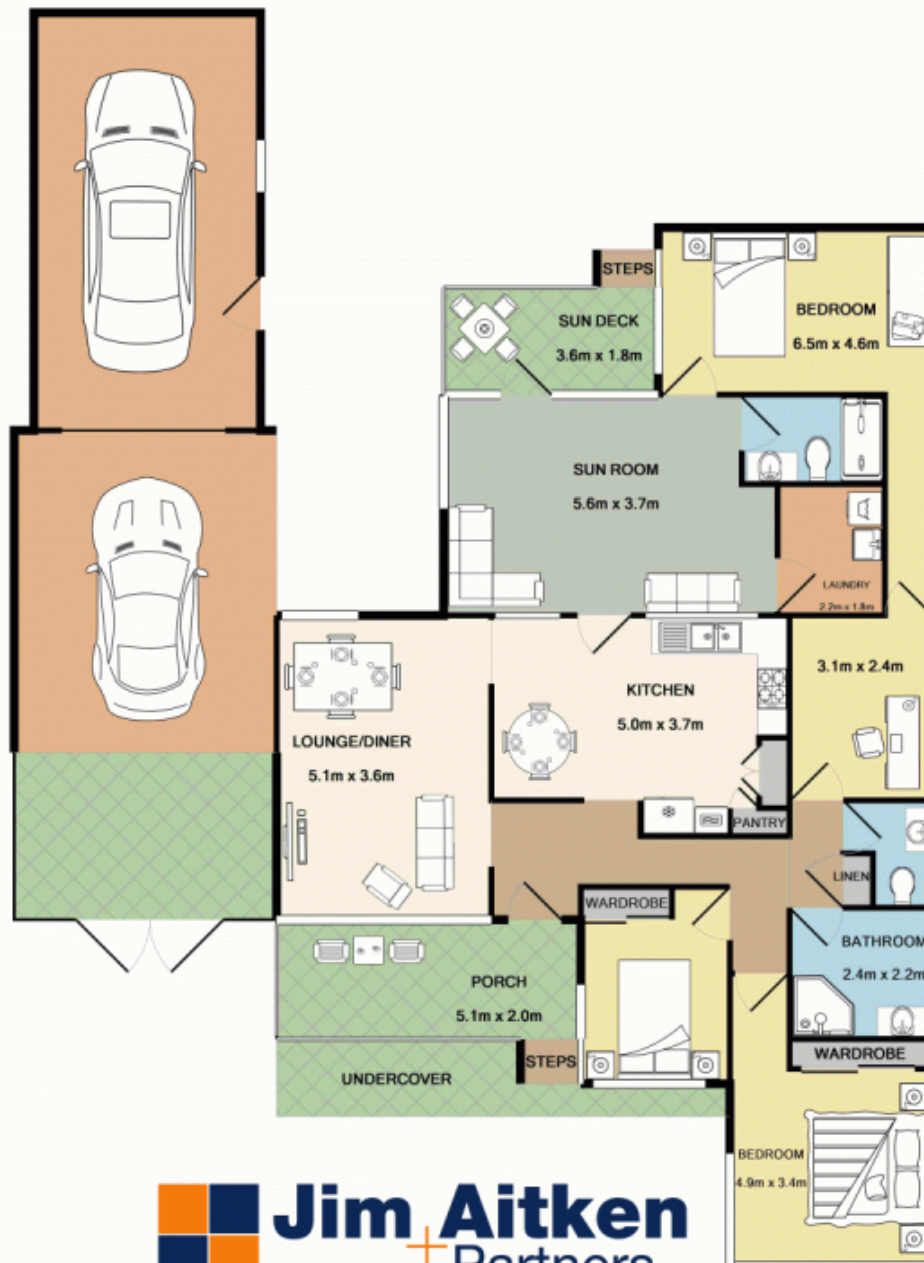
- + Ducted air-conditioning
- + Oversized lock up garage
- + Built in robes
- + Generous bedrooms
- + Single carport
- + Fully fenced yard

**Type** : House  
**Price** : \$ 610,000  
**Building Size** : 125 sqm  
**Land Size** : 607 sqm  
**View** : <https://www.aitkenre.com.au/8062117>



**Kenrick Muir**  
02 4732 5055

[For full version visit the website](https://www.aitkenre.com.au)



**Jim Aitken**  
Partners

Whilst every attempt has been made to ensure the accuracy of the floor plan contained here, measurements of doors, windows, rooms and any other items are approximate and no responsibility is taken for any error, omission, or mis-statement. This plan is for illustrative purposes only and should be used as such by any prospective purchaser. The services, systems and appliances shown have not been tested and no guarantee as to their operability or efficiency can be given.  
Made with Metropix ©2019